

# Milwaukee®

Nothing but **HEAVY DUTY.**™



# 2016

## POWERTOOLS CATALOGUE

CORDLESS / AC CORDED



Nothing but **HEAVY DUTY**.™

# THE WORLD LEADER IN CORDLESS INNOVATION

**M12**™

**M18**™



**OVER 100 JOBSITE SOLUTIONS**

## **M12™**

FUEL	8
Heavy Duty	10
Power Packs	14
Lighting	15
Lifestyle	16
Heated Gear	17
Batteries & Chargers	18

## **M18™**

FUEL	24
Brushless	28
Heavy Duty	29
Power Packs	35
Lighting	38
Lifestyle	40
Batteries & Chargers	41

## **AC CORDED TOOLS**

Drills / Screwguns	46
Rotary Hammers & Breakers	47
Wall Chasers	50
Grinding, Sanding & Polishing	51
Impact Wrenches	57
Woodworking Saws	58
Dust Extraction	59

## **FORCE LOGIC™**

M12™ Press Tools & Jaws	63
M18™ Press Tools & Jaws	64



# BY THE TRADE FOR THE TRADE

---

When it comes to power tools, there isn't an expert out there who knows what works better than you. Milwaukee® has a proven track record of getting out in the field to understand the demands of a constantly changing workplace. By working with our users, we're designing tools that make you more productive and help you be the best at what you do.

## **GAME-CHANGING SOLUTIONS**

At Milwaukee®, the phrase "good enough" doesn't exist in our vocabulary. Our goal is to solve problems in ways that have never been done before. The result: tools that offer unmatched levels of performance, productivity and life.

## **BUILT ON THE BEST FOUNDATION**

### ***REDLITHIUM-ION™ BATTERIES***

It lasts longer, thinks fast, and works harder than all other professional LITHIUM-ION batteries. Built to withstand even the harshest environments, REDLITHIUM-ION™ batteries deliver more work over the life of the battery, no matter what the job.

### ***MILWAUKEE® HIGH PERFORMANCE MOTORS***

Highly advanced motor technology boosts efficiency, generating more power from a compact power plant. That means the ultimate performance, durability and runtime comes in a smaller, lighter package.

### ***REDLINK™ INTELLIGENCE***

An advanced combination of hardware and software, REDLINK™ Intelligence enables full-circle communication between our batteries and tools, allowing for unmatched levels of performance, protection and productivity.





Nothing but **HEAVY DUTY.**

# REDLITHIUM-ION™ BATTERIES

## BATTERY TECHNOLOGY

Since introducing the world's first LITHIUM-ION cordless system in 2005, Milwaukee® has continued to lead the industry in LITHIUM-ION technology and patents. Milwaukee's focus on LITHIUM-ION continually drives us ahead of the competition to deliver the best battery systems in the industry. Our exclusive integration of chemistry, cell design and circuitry combines for superior output in the harshest environments.

## LIFETIME ADVANTAGE



Based on 35A CC discharge over the life of the battery pack

REDLITHIUM-ION™ Battery Packs offer more life than any other professional LITHIUM-ION or NiCd system. That means your tools will complete more work per charge and more work over the life of the battery.

### WATER PROTECTION BARRIER



- Guides water away from the electronics and out of the battery pack

Cordless tools are exposed to the elements on a daily basis, including rain. By guiding water out of the pack and applying an advanced coating over critical components, packs are better protected from corrosion. This leads to a more durable and longer lasting pack.

### REDLINK™ ELECTRONICS



- Full M18™ System compatibility
- Protection from abuse
- Optimum tool and pack performance

Milwaukee® battery packs are constantly communicating with the tools to monitor overload and temperature in abusive situations. REDLINK™ electronics also monitor discharge and charge analytics, which maintain performance and extend the life of the pack.

### TEMP CONTROL FRAME



- Extends run-time and life by minimising heat
- Operates below -18° C

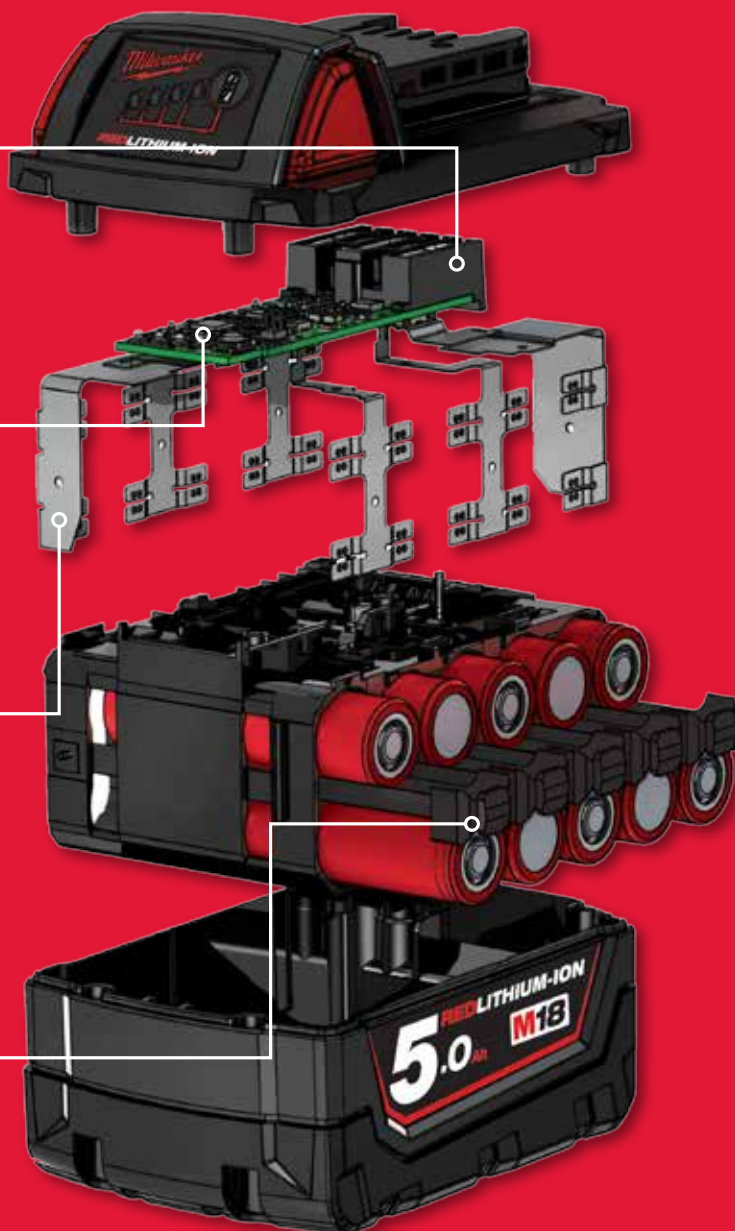
Milwaukee® continues to push the performance of cordless tools, now outperforming their corded counterparts. This means the tools require higher amounts of energy than ever before, causing the battery to heat up faster. Milwaukee's exclusive design transfers energy more efficiently than any other battery on the market, allowing the pack to run cool under heavy duty applications.

### SHOCK RESPONSIVE SEPARATORS



- Prevents pack failure from vibration or drops

Cordless tools that create high amounts of vibration (high torque impact wrench, rotary hammer, SAWZALL®) are abusive towards battery packs. Tools and batteries often fall off of elevated surfaces, creating an isolated impact on the battery. The shock responsive separators create a more durable pack by taking stress off the welds on the temp control frame under these conditions.



**Milwaukee**<sup>®</sup>

Nothing but **HEAVY DUTY.**<sup>™</sup>







## **M12**™ **PORTABLE PRODUCTIVITY**

The Milwaukee® M12™ cordless system delivers industry-leading durability and power in a size that outperforms the competition in the tightest places. M12™ defines cordless tool innovation, transforming inefficient manual tools – such as cable and copper tubing cutters – into advanced workhorses powered by Milwaukee's REDLITHIUM-ION™ battery technology. More than 40 unique solutions make the M12™ family the largest sub-compact cordless system on the market.

The flagship of this family: the M12 FUEL™ collection – extreme-performance cordless power tools designed, engineered and built to deliver unmatched productivity. Milwaukee® affirms its industry leadership, integrating three ground-breaking technologies in a single package: a best-in-class POWERSTATE™ Brushless Motor, REDLITHIUM-ION™ battery technology, and exclusive REDLINK PLUS™ Intelligence. M12 FUEL™ puts unrivaled durability, run-time and performance into the hands of the professional tradesman.





Nothing but **HEAVY DUTY.**<sup>®</sup>

## DRIVEN TO OUTPERFORM.<sup>™</sup>

M12 FUEL<sup>™</sup> is engineered for the most demanding tradesmen in the world. M12 FUEL<sup>™</sup> delivers unrivaled performance in a compact structure and features three Milwaukee<sup>®</sup> exclusive innovations — the POWERSTATE<sup>™</sup> BRUSHLESS Motor, REDLITHIUM-ION<sup>™</sup> Battery Pack, and REDLINK PLUS<sup>™</sup> Intelligence Hardware and Software — that deliver unmatched power, run-time and durability.

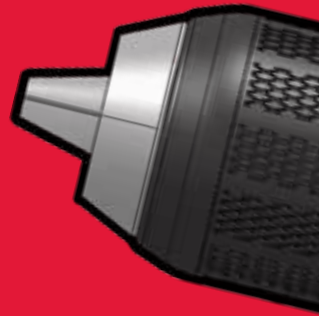
Simply put, M12 FUEL<sup>™</sup> is best-in-class, full-circle technology that drives, protects and powers your cordless tools beyond the rest.

## M12 FUEL<sup>™</sup>

DRIVEN TO OUTPERFORM.<sup>™</sup>

### 1 POWERSTATE<sup>™</sup> BRUSHLESS MOTOR

- Milwaukee<sup>®</sup> Designed and Built Brushless Motor
- Outperforms All Leading Competitors
- Maximum Motor Life



INCLUDED IN ALL MARKED M12 FUEL<sup>™</sup> PRODUCTS



REDLITHIUM-ION<sup>™</sup>

## UPGRADE. OUTWORK. OUTLAST.

**MORE RUN-TIME**

**MORE POWER**

**MORE RECHARGES**



**M12**  
SYSTEM

FUEL<sup>™</sup> FUEL<sup>™</sup> FUEL<sup>™</sup>

# M12 FUEL™

DRIVEN TO OUTPERFORM.™



## 2 REDLINK PLUS™ INTELLIGENCE

- Most Advanced Electronic System on the Market for Maximum Performance
- Total System Communication with Overload Protection Increases Tool Life
- Built-in Fuel Gauge Displays Remaining Charge



## 3 REDLITHIUM-ION™ 2.0Ah & 4.0Ah BATTERY PACKS

- Maximum Motor Life
- Maximum Power
- Operates Below -18° C / 0° F





**M12 FUEL**  
DRIVEN TO OUTPERFORM.™

**M12 FUEL™ Compact 2-Speed Driver Kit**

M12CD-202C (Tool-Only M12CD-0)

**Specifications:**

Voltage	12V
Peak Torque	37Nm
RPM	0-450/ 0-1700
Chuck Type	1/4" Hex Quick Change
Length	168mm
Weight	1.04kg



**Includes:** (1) M12CD-0 (2) M12B2 (1) C12C (1) Carrying Case

**Features & Benefits**

- POWERSTATE™ Brushless Motor - Milwaukee® designed and built
- REDLINK PLUS™ Intelligence - Most advanced electronic system on the market – 2 Mode DRIVE CONTROL™
- REDLITHIUM-ION™ Battery Technology - Superior pack construction, electronics, and performance deliver more work per charge
- Built-in LED light - illuminates work surface



**M12 FUEL™ 13mm Hammer Drill Driver Kit**

M12CPD-202C (Tool-Only M12CPD-0)

**Specifications:**

Voltage	12V
RPM	0 – 450 / 0 – 1700
BPM	0 – 25,500
Chuck Type	13mm Metal Single Sleeve
Peak Torque	37Nm
Weight	1.32kg



**Includes:** (1) M12CPD-0 (2) M12B2, (1) C12C (1) Belt Clip (1) Carrying Case

**Features & Benefits**

- POWERSTATE™ Brushless Motor: delivers up to 37Nm of peak torque with maximum sustained torque
- REDLINK PLUS™ Intelligence - most advanced electronic system on the market for maximum performance
- REDLITHIUM-ION™ battery technology - superior pack construction, electronics, and performance delivers more work per charge
- Belt hook - easy work belt storage



**M12 FUEL™ Rotary Hammer SDS Plus Kit**

M12CH-402C (Tool-Only M12CH-0)

**Specifications:**

Voltage	12V
RPM	0-900
BPM	0-6200
Capacity	16mm max capacity
Length	254mm
Weight	1.90kg



**Includes:** (1) M12CH-0 (2) M12B4 (1) C12C (1) Carrying Case

**Features & Benefits**

- POWERSTATE™ Brushless Motor
- REDLINK PLUS™ Intelligence - Milwaukee® advanced electronic system offers maximum performance and total system communication
- Drills up to 90 8.5mm x 38.5mm holes in concrete
- Features LED light and fuel gauge to display remaining charge



**M12 FUEL™ 140mm Circular Saw**

M12CCS44-0 (Tool-Only)

**Specifications:**

Voltage	12V
RPM	0-3600
Blade Size/ Bore Size	140mm/ 20mm
Guard/ Shoe Material	Aluminium
Overload Protection	Yes
Weight	2.46kg



**Includes:** Skin only tool. (Battery and Charger sold separately)

**Features & Benefits**

- POWERSTATE™ Brushless Motor: Delivers up to 170 cuts on a single charge with 4.0Ah battery
- REDLINK PLUS™ Intelligence - Most advanced electronic system on the market for maximum performance
- 44mm cut capacity





### M12 FUEL™ 1/4" Hex Impact Driver Kit

M12CID-202C (Tool-Only M12CID-0)

#### Specifications:

Peak Torque	135Nm
RPM	0-1,200/ 0-2,650
IPM	0-3,550
Chuck Type	1/4" Hex Quick Change
Length	152mm
Weight	1.0kg



**Includes:** (1) M12CID-0 (2) M12B2 (1) C12C (1) Belt Clip (1) Carrying Case

### Features & Benefits

- POWERSTATE™ Brushless Motor - Milwaukee® designed and built brushless motor outperforms
- REDLINK PLUS™ Intelligence - Most advanced electronic system on the market—2-Mode DRIVE CONTROL™
- One-handed bit insertion allows for fast and easy bit changes



### M12™ Cordless 3/8" Impact Wrench Kit

M12CIW38-202C (Tool Only M12CIW38-0)

#### Specifications:

Peak Torque	158Nm
RPM	0-2650
IPM	0-3,500
Anvil Type	Friction Ring
Length	167mm
Weight	1.30 kg



**Includes:** (1) M12CIW38-0 (2) M12B2 (1) C12C (1) Belt Clip (1) Carrying Case

### Features & Benefits

- Heavy Duty full metal gearbox and forged steel impact mechanism for superior durability and maximum torque
- Built in LED light illuminates the work surface
- All metal reversible belt clip for quick and easy hanging of tool
- On-board fuel gauge displays remaining battery charge state



### M12 FUEL™ 1/2" Impact Wrench

M12CIW12-0 (Tool Only)

#### Specifications:

Peak Torque	160Nm
IPM	0-3500
Voltage	12V
Anvil Type	Friction Ring
Length	159mm
Weight	1.0 kg



**Includes:** Skin only tool. (Battery and Charger sold separately)

### Features & Benefits

- POWERSTATE™ Brushless Motor - Milwaukee® designed and built brushless motor outperforms
- REDLINK PLUS™ Intelligence - Most advanced electronic system on the market—2-Mode DRIVE CONTROL™
- One-handed bit insertion allows for fast and easy bit changes



## HEAVY DUTY

### M12™ Cordless 1/4" Hex Screwdriver Kit

M12BD-152C (Tool-Only M12BD-0)

#### Specifications:

Peak Torque	31Nm
RPM	0-400/ 0-1500
Chuck Type	1/4" Hex Quick Change
Length	171mm
Weight	1.08kg



**Includes:** (1) M12BD-0 (2) M12B (1) C12C (1) Carrying Case

#### Features & Benefits

- 18 Clutch settings plus drill mode allows you to tune to specific applications
- Built in LED light illuminates the work surface
- On-board fuel gauge displays remaining battery charge state
- New ergonomic handle with narrow, soft contoured grip for maximum comfort during prolonged use



### M12™ Cordless Hammer Drill/Driver Kit

M12BPD-302C (Tool-Only M12BPD-0)

#### Specifications:

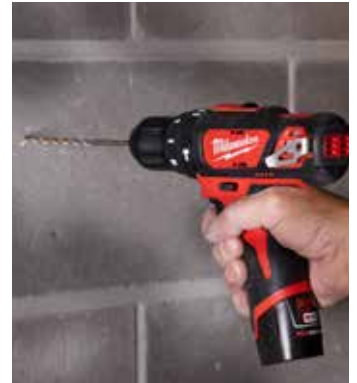
Peak Torque	31Nm
RPM	0-400/ 0-1500
BPM	0-22,500
Chuck Type	10mm Metal Single Sleeve
Length	190mm
Weight	1.47 kg



**Includes:** (1) M12BPD (2) M12BX (1) C12C (1) Carrying Case

#### Features & Benefits

- 3 Mode Selection ring: Hammer mode, Screw driving mode, Drill mode
- New ergonomic handle with narrow, soft contoured grip for maximum comfort during prolonged use
- Built in LED light illuminates the work surface
- On-board fuel gauge displays remaining battery charge state



### M12™ Right Angle Drill Kit

C12RAD-22B (Tool-Only C12RAD-0)

#### Specifications:

Voltage	12V
RPM	0-800
Max. Drilling Capacity in Steel/ Wood	10/ 22mm
Chuck Type	10mm
Max Torque	12Nm
Weight	1.10kg



**Includes:** (1) C12RAD-0 (2) M12B (1) C12C (1) Carry Bag

#### Features & Benefits

- Variable speed paddle switch for comfort and full control
- Forward and reverse functions
- Heavy duty full metal gearbox and gears for superior durability and maximum torque
- 95mm head fits into tight spaces



### M12™ Cordless 1/4" Hex Impact Driver Kit

M12BID-152C (Tool-Only M12BID-0)

#### Specifications:

Peak Torque	113Nm
RPM	0-2500
IPM	0-3,300
Chuck Type	1/4" Hex Bit Reception
Length	165mm
Weight	1.04 kg



**Includes:** (1) M12BD (2) M12B (1) C12C (1) Carrying Case

#### Features & Benefits

- Heavy Duty full metal gearbox and forged steel impact mechanism for superior durability and maximum torque
- New ergonomic handle with narrow, soft contoured grip for maximum comfort during prolonged use
- Built in LED light illuminates the work surface
- On-board fuel gauge displays remaining battery charge state



## HEAVY DUTY

### M12™ Cordless 3/8" Impact Wrench

M12BIW38-0 (Tool-Only)

#### Specifications:

Peak Torque	136Nm
RPM	0-2500
IPM	0-3300
Anvil Type	Friction Ring
Length	165mm
Weight	1.04 kg



**Includes:** Skin only tool. (Battery and Charger sold separately)

#### Features & Benefits

- New Mechanism Design delivers maximum fastening and break away torque
- Heavy Duty full metal gearbox and forged steel impact mechanism for superior durability and maximum torque
- New ergonomic handle with narrow, soft contoured grip for maximum comfort during prolonged use
- All metal reversible belt clip for quick and easy hanging of tool



### M12™ Cordless 3/8" Ratchet Kit

M12IR-21B (Tool-Only M12IR-0)

#### Specifications:

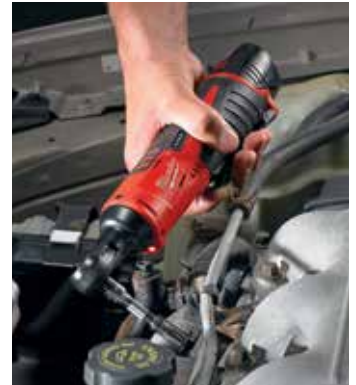
Voltage	12V
Max Torque	47Nm
Anvil	3/8"
RPM	0-250
Weight	1.7 kg



**Includes:** (1) M12IR-0 (1) M12B (1) C12C (1) 3/8" - 1/4" Adaptor (1) Contractor Bag

#### Features & Benefits

- Most powerful in its class with 47Nm of torque
- Superior fastening speed up to 250 rpm
- Variable speed metal trigger for maximum control and durability.
- On board fuel gauge and LED light



### M12™ Cordless Compact Vacuum

M12HV-0 (Tool Only)

#### Specifications:

Air Volume (LPM)	934 (33 CFM)
Canister Volume	0.6L
Nozzle Dimension	32mm
Pleated Filter	Reusable
Length	470mm
Weight	1.50 kg



**Includes:** (1) M12HV-0 (1) Crevice tool attachment (1) Utility nozzle attachment (1) Extension wand. (Battery and charger sold separately)

#### Features & Benefits

- Lock-on switch to reduce user fatigue during extended use.
- Clear view window to easily identify canister fill level
- Universal 32mm nozzle
- 3 versatile attachments included to suit a wide range of applications (crevice tool, utility nozzle and extension wand)



### M12™ Universal Dust Extractor

M12DE-0C (Tool Only)

#### Specifications:

Max. Bit Diameter	16mm
Collar Size (small)	Ø 43mm-46mm
Collar Size (medium)	Ø 48mm-55mm
Collar Size (large)	Ø 56mm- 59mm
Filter	HEPA
Weight	1.5 kg



**Includes:** (3) Universal Side Handle Collars (1) Side Handle Grip (2) Nozzles (1) Carrying Case

#### Features & Benefits

- Industry's only universal dust extractor: compatible with most SDS Plus Rotary Hammers and some AC & DC Hammer drills
- Self-powered by M12™ REDLITHIUM-ION™ Battery Pack
- 3-Mode Switch with auto-on
- Replaceable HEPA filter: Highest quality debris filtration and lowest cost of ownership





## HEAVY DUTY

### M12™ Cordless Rotary Tool

C12RT-0 (Tool-Only)

#### Specifications:

Voltage	12V
RPM	5000-37,000
Collet Size	0.8-3.2mm
Length	240mm
Weight	0.6kg



**Includes:** (5) Cutting Wheels (1) Mandrel  
Skin only tool. (Battery and Charger sold separately)

#### Features & Benefits

- Spindle lock mechanism for easy accessory changes
- Superior ergonomics and lightweight
- Integrated fuel gauge and overload protection allows increased productivity and user comfort
- Versatile application range



### M12™ 400ml Cordless Grease Gun

M12GG-0 (Tool-Only)

#### Specifications:

Voltage:	12V
Cartridge Capacity:	400ml
Hose Length:	914mm
Max PSI:	8,000
Runtime:	7 Cartridges*
Tool Weight:	3.3kg



**Includes:** (1) M12GG-0 (1) 914mm Flex Hose with Spring Guard (1) Grease Coupler

\*Run-time based on M12BX 3.0Ah battery

#### Features & Benefits

- Air bleeder valve priming mechanism for quick flow
- On-board LED Fuel Gauge displays remaining run-time.
- Integrated hose storage, more convenience with less mess.
- Ergonomic handle design for added comfort during prolonged use.



### M12™ Spot Polisher/Detail Sander Kit

M12BPS-301B (M12BPS-0 Tool-Only)

#### Specifications:

Voltage	12V
Sanding RPM	0-8300
Polishing RPM	0-2800
Tool Length	130mm
Weight	1.8kg



**Includes:** (1) M12BPS-0 (1) M12BX (1) C12C (1) 5 PC Accessory Kit: (1) 3" Hook & Loop Backing Pad (1) 2" Twist Lock Backing Pad (1) 3" Wool Polishing Pad (1) 3" Yellow Compound Foam Pad (1) 3" White Polishing Foam Pad (1) Side Handle (1) Contractor Bag

#### Features & Benefits

- Tool free accessory change allows the user the ease of switching quickly between polishing or sanding accessories for greater efficiency
- Variable speed trigger for precise control to match the requirements of your surface
- Compact design provides unique access and control which compliments a full sized sander/polisher
- Dual mode control: switch effortlessly between polishing and sanding mode with exact speed for each application



### M12™ Jigsaw

M12JS-0 (Tool-Only)

#### Specifications:

Voltage	12V
Strokes per Minute	0-2800
Stroke Length	19mm
Length	220mm
Weight	1.85kg



**Includes:** (1) Jigsaw Blade (1) Non-marring Shoe (1) Anti-splintering Insert.  
Skin only tool. (Battery and Charger sold separately)

#### Features & Benefits

- Innovative Hybrid Grip™ design delivers greater control by bringing the grip closer to the material with a variable speed trigger
- Tool-free blade change and bevel adjustment with 90° positive lock
- Surface protection- non-marring shoe and anti-splintering insert
- LED light and fuel gauge



# HEAVY DUTY

## M12™ Cordless Palm Nailer

C12PN-0 (Tool-Only)

### Specifications:

Voltage	12V
BPM	2.9J/ 270
Max Nail Length	100mm
Max Nail Head	10mm
Length	1.6kg



**Includes:** (1) Hand strap  
Skin only tool. (Battery and Charger sold separately)

### Features & Benefits

- Powerful 2.9J impact energy drives a 50mm nail in under 2 seconds
- Industrial magnetic collet securely holds framing nails for one handed use
- Gets into positions unreachable by a traditional nail gun
- Run time allows for x100 50mm nails per charge, drives in up to 200 bracket nails per charge



## M12™ Multi Tool Kit

C12MT-22B (Tool-Only C12MT-0)

### Specifications:

Voltage	12V
Oscillating Angle Left/Right	1.5°/1.5°
Oscillating Speed	5000 - 20,000 min-1
Weight	1.0kg



**Includes:** (1) C12MT-0 (2) M12B (1) C12C (1) Plunge Cut Blade (1) Sanding Backing Pad (1) Assorted Sanding Sheets (1) Contractor Bag

### Features & Benefits

- Variable speed allows quick completion of professional applications into materials such as metal, wood and plastic
- Rotate accessory 360° to suit all applications
- Versatile cordless solution for cutting and removal applications
- Accessory adaptor suites most brands of blades and accessories available



## M12™ Copper Pipe Cutter

C12PC-0 (Tool-Only)

### Specifications:

Voltage	12V
RPM	500
Copper Tubes (outside diameter)	1/2", 5/8", 3/4", 7/8", 1", 1 1/8"
Min Space for Tube Cutting	H 80mm, W 37mm
Length	360mm
Weight	1.5kg



**Includes:** Skin only tool. (Battery and Charger sold separately)

### Features & Benefits

- Auto locking cut mechanism cuts installed copper tubing with as little as 37mm clearance
- Auto adjusting jaws- automatically adjust to pipe size from 1/2" - 1 1/8"
- All metal sealed front end, rust and corrosion resistant cut head
- Performs up to 200 cuts per charge for increased productivity



## M12™ Bandsaw

M12BS-0 (Tool-Only)

### Specifications:

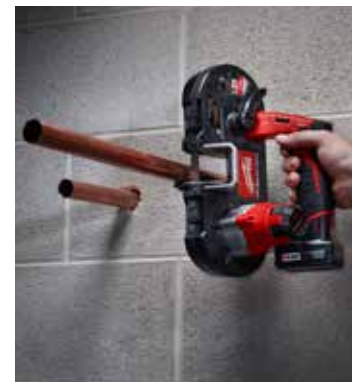
SFPM	280
Cuts	10mm threaded rod
Unistrut	40mm x 40mm
Length	300mm
Weight	3.0 kg



**Includes:** Skin only tool. (Battery and Charger sold separately)

### Features & Benefits

- Variable speed trigger
- LED light
- Cuts 19mm EMT in 3 seconds
- Blade tension adjustment: Adjustable blade tracking



# HEAVY DUTY

## M12™ Caulking Gun Kit

M12PCG-310C-151B - with 310ml Cartridge Carriage Assembly (M12PCG-0 Tool Only)

**Specifications:**

Voltage	12V
Pushing Force	1800N
Inches per minute	0-29
Length	410mm
Weight	1.7kg



**Includes:** (1) M12PCG-0 (1) 310ml Cartridge Carriage Assembly (1) M12B (1) C12C (1) Contractor Bag

## Features & Benefits

- Constant flow technology - consistent beads resulting in cleaner, faster installations
- Top speed dial & variable speed trigger, complete dispensing rate control
- Compact & Lightweight
- Anti-Drip - Automatically reverses plunger relieving pressure from the tube



# POWER PACKS

## M12 FUEL™ 2A Power Pack

M12CPP2A-421C

**Includes:**

- (1) M12CPD-0
- (1) M12CID-0
- (1) M12B2
- (1) M12B4
- (1) C12C
- Carrying Case



## M12™ 2 PCE Power Pack

M12BPP2B-152B

**Includes:**

- (1) M12BPD-0
- (1) M12BID-0
- (2) M12B
- (1) C12C
- Contractor Bag





# LIGHTING

## M12™ LED Lantern/ Flood Light

M12LL-0 (Tool Only)

### Specifications:

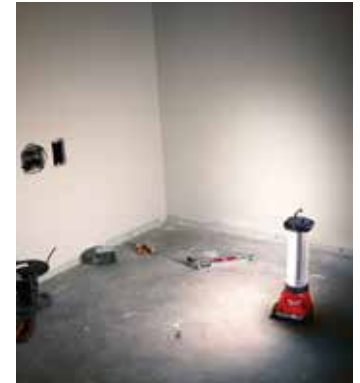
Voltage	12V
Lumens	400
Charger	USB 2.1Amp
Battery	M12™ REDLITHIUM-ION™
Length	270mm
Weight	0.45kg



**Includes:** Skin only tool. (Battery and Charger sold separately)

### Features & Benefits

- TRUEVIEW™: High definition lighting technology
- 180°- 360° Adjustable Beam: allows the user to select between area and task lighting
- Four Light Settings: High, medium, low, strobe
- 2.1A USB Charger: For tablets, smart phones and other electronic devices



## M12™ LED Stick Light

M12SL-0 (Tool Only)

### Specifications:

Hands Free	Multi-position stainless steel hook
Lumens	220
Runtime	4+ hours on a compact battery
Length	235mm
Weight	0.2kg



**Includes:** Skin only tool. (Battery and Charger sold separately)

### Features & Benefits

- High Output LED x3 provides bright, even coverage over entire work surface
- Multi-position stainless steel hook allows user to put the light in a horizontal or vertical position for hands-free use
- Compact size provides ability to fit into tight areas
- Impact resistant & replaceable lens



## M12™ Worklight

M12TLED-0 (Tool Only)

### Specifications:

Voltage	12V
LED Light	Yes
Head Rotation	90°
Lumens	160
Hands Free	Integrated magnet



**Includes:** Skin only tool. (Battery and Charger sold separately)

### Features & Benefits

- Sealed aluminium head: designed for impact and weather resistant durability.
- 90° rotating head: provides flexible, focused illumination
- Magnetic back: Leaves both hands free for work anywhere on the jobsite



## M12™ High Output LED Spotlight

M12SLED-0 (Tool Only)

### Specifications:

Voltage	12V
Lumens (High Mode)	750
Lumens (Low Mode)	400
Lumens (Strobe mode)	750
Length	165mm
Weight	0.64kg



**Includes:** Skin only tool. (Battery and Charger sold separately)

### Features & Benefits

- TRUEVIEW™: High output lighting technology
- 640M Beam Distance: Allows the user to see a highly focused beam
- 3 Modes: 750, 400 Lumens and strobe safety function
- 45 Degree Rubber Overmould Stand: For aiming beam upward during prolonged use



## LIFESTYLE

### M12™ Compact Jobsite Radio

C12JSR-0 (Tool Only)

#### Specifications:

Voltage (DC)	12V
Voltage (AC)	220-240V
Dimensions	267 x 102 x 178mm
Runtime (1.5Ah)	Up to 8hrs
Weight	1.8kg



**Includes:** (1) 220–240V Power Adaptor (1) 3.5mm Jack Plug for AUX Connection i.e iPods. Skin only tool. (Battery and Charger sold separately)

### M12™ Wireless Jobsite Speaker

M12JSSP-0 (Tool Only)

#### Specifications:

Bluetooth	YES
USB	2.1Amp
Aux	3.5mm
Runtime (per charge)	up to 25hrs on 4.0Ah
Dimensions	102mm x 152mm
Weight	0.726kg



**Includes:** Skin only tool. (Battery and Charger sold separately)

### M12™ Cordless Power Source

M12PP-0 (Tool Only)

#### Specifications:

On Board Fuel Gauge	Yes
Powered by	All M12™ Batteries
2.1 Amp USB Port	Universal charging for smart phones, tablets, and other portable electronic devices.
Length	104mm



**Includes:** Battery and Charger sold separately

### M18™ Power Source

M18USBPSHJ2 (Tool Only)

#### Specifications:

Voltage	18V
Battery Type	REDLITHIUM-ION™
Charge Rate	2.1 Amp
USB Port	Yes



**Includes:** Skin only tool. (Battery and Charger sold separately)

### Features & Benefits

- Digital processor delivering optimum signal and clarity
- Weather proof MP3 player compartment
- Weather proof aluminium speakers for rich, full sound
- Digital display tuner for accurate signal selection



### Features & Benefits

- Portable Jobsite Speaker with Bluetooth® Connectivity for wireless audio streaming and control from up to 9 metres away
- Premium speaker with bass port delivers loud, clear sound at all volumes
- Drop, water and debris resistant for tough jobsite conditions
- Rugged overmold with metal speaker grill



### Features & Benefits

- Compatible with all M12™ Heated Gear
- On-board fuel gauge
- 2.1 Amp powered USB port charges most portable electronic devices including tablets
- Compatible with all M12™ battery packs



### Features & Benefits

- For use with all M18™ Battery Packs.
- USB port charges portable electronic devices such as mobile phone, MP3 player, digital camera and GPS
- Designed for use with M12™ Heated Jackets\*

\*Suitable with all Generation 2 jackets onwards featuring the expandable battery pocket.





**M12**<sup>TM</sup>

# HEATED GEAR

**HEATED  
HOODIES**



**HEATED  
JACKETS**



**SEE IN STORE FOR THE LATEST  
IN MILWAUKEE HEATED GEAR!**



# BATTERIES & CHARGERS

## M12™ 4 Bay Sequential Charger

M12C4 (Tool Only)

**Specifications:**

Charge Time (3.0Ah)	60 min
Charge Type	Sequential
Wall Mount	Yes

**Includes:**

Tool Only (M12™ Batteries sold separately)



### Features & Benefits

- Slim design is perfect for the benchtop
- Integrated hang holes are ideal for vertical mounting
- Skip button lets you select which battery to charge next for improved productivity on the jobsite



## M12™ M18™ Rapid Charge Station

M12-18C3 (Tool Only)

**Specifications:**

Voltage	12V and 18V
Battery Type	REDLITHIUM-ION™
Charge Type	3 packs simultaneously
Wall Mount	Yes
Carry Handle	Yes
Weight	4.7kg



**Includes:** Tool only (M12™ & M18™ batteries not supplied)

### Features & Benefits

- Charges three batteries simultaneously for heavy demand.
- Each set charges one M12™ or one M18™ battery at a time
- Reduce downtime, increases productivity
- REDLINK™ Intelligence- charger communicates with the battery pack to ensure optimum performance and extend life



## M12™ Starter Pack

M12SP-151B

**Specifications:**

Voltage	12V
Battery Type	REDLITHIUM-ION™
Battery Supplied	(1) 1.5Ah
Charger	M12™ System

**Includes:** (1) M12B (1) C12C



## M12™ 1.5Ah REDLITHIUM-ION™ Battery Pack

M12B

**Specifications:**

Amp Hours	1.5Ah
Cell Chemistry	REDLITHIUM-ION™
Charge Time	30 min



## M12™ 2.0Ah REDLITHIUM-ION™ Battery Pack

M12B2

**Specifications:**

Amp Hours	2.0Ah
Cell Chemistry	REDLITHIUM-ION™
Charge Time	40 min



## BATTERIES & CHARGERS

### M12™ 3.0Ah REDLITHIUM-ION™ Battery Pack

M12BX

**Specifications:**

Amp Hours	3.0Ah
Cell Chemistry	REDLITHIUM-ION™
Charge Time	60 min

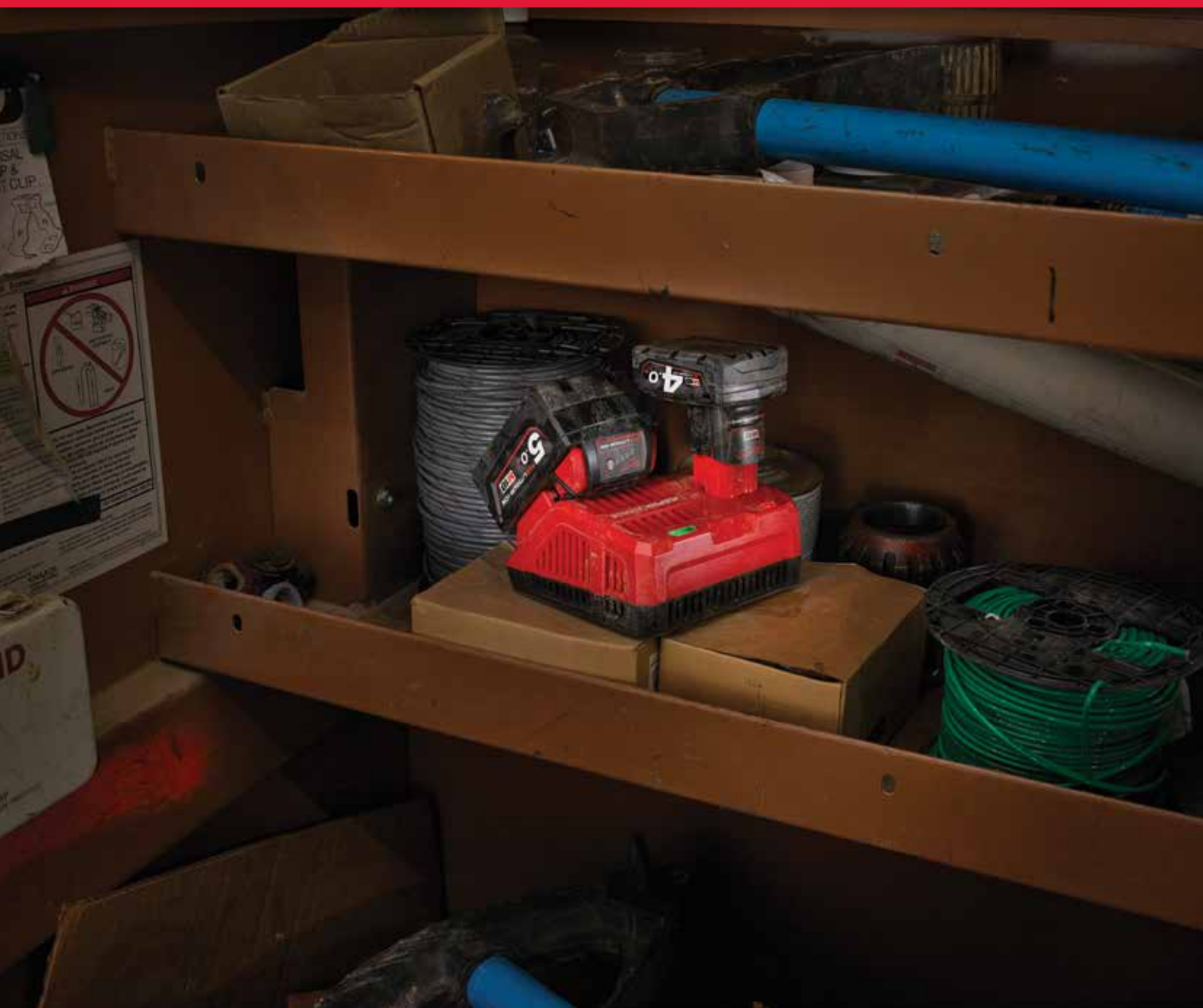


### M12™ 4.0Ah REDLITHIUM-ION™ Battery Pack

M12B4

**Specifications:**

Amp Hours	4.0Ah
Cell Chemistry	REDLITHIUM-ION™
Charge Time	90 min





**Milwaukee**<sup>®</sup>

Nothing but **HEAVY DUTY.**<sup>™</sup>







## **M18**™ **REVOLUTIONARY PERFORMANCE**

The Milwaukee® M18™ cordless system represents the ultimate synergy of professional grade power, light weight, extreme performance and superior ergonomics. These tools stand alone, with patented technologies, innovative motors and advanced electronics powered by REDLITHIUM-ION™ battery technology for unmatched run-time. Offering more than 50 unique solutions, the M18™ family is the fastest growing 18V cordless system on the market.

The flagship of this family: the M18 FUEL™ collection – extreme-performance cordless power tools designed, engineered and built to deliver superior productivity. Milwaukee® affirms its industry leadership, integrating three ground-breaking technologies in a single package: a best-in-class POWERSTATE™ Brushless Motor, REDLITHIUM-ION™ battery technology, and exclusive REDLINK PLUS™ Intelligence. M18 FUEL™ puts unrivaled durability, run-time, power and performance into the hands of the professional tradesman.



## DRIVEN TO OUTPERFORM.™

M18 FUEL™ is engineered for the most demanding tradesmen in the world. M18 FUEL™ delivers unrivaled performance in a compact structure and features three Milwaukee® exclusive innovations — the POWERSTATE™ Brushless Motor, REDLITHIUM-ION™ Battery Pack, and REDLINK PLUS™ Intelligence Hardware and Software — that deliver unmatched power, run-time and durability.

Simply put, M18 FUEL™ is best-in-class, full-circle technology that drives, protects and powers your cordless tools beyond the rest.



## M18 FUEL™ DRIVEN TO OUTPERFORM.™

## 1 POWERSTATE™ BRUSHLESS MOTOR

This best-in-class brushless motor works harder and lives longer than all leading competitors.

- Milwaukee® Designed and Built Brushless Motor
- Outperforms All Leading Competitors
- Maximum Motor Life

### INCLUDED IN ALL MARKED M18 FUEL™ PRODUCTS



REDLITHIUM-ION™

**UPGRADE.  
OUTWORK. OUTLAST.**

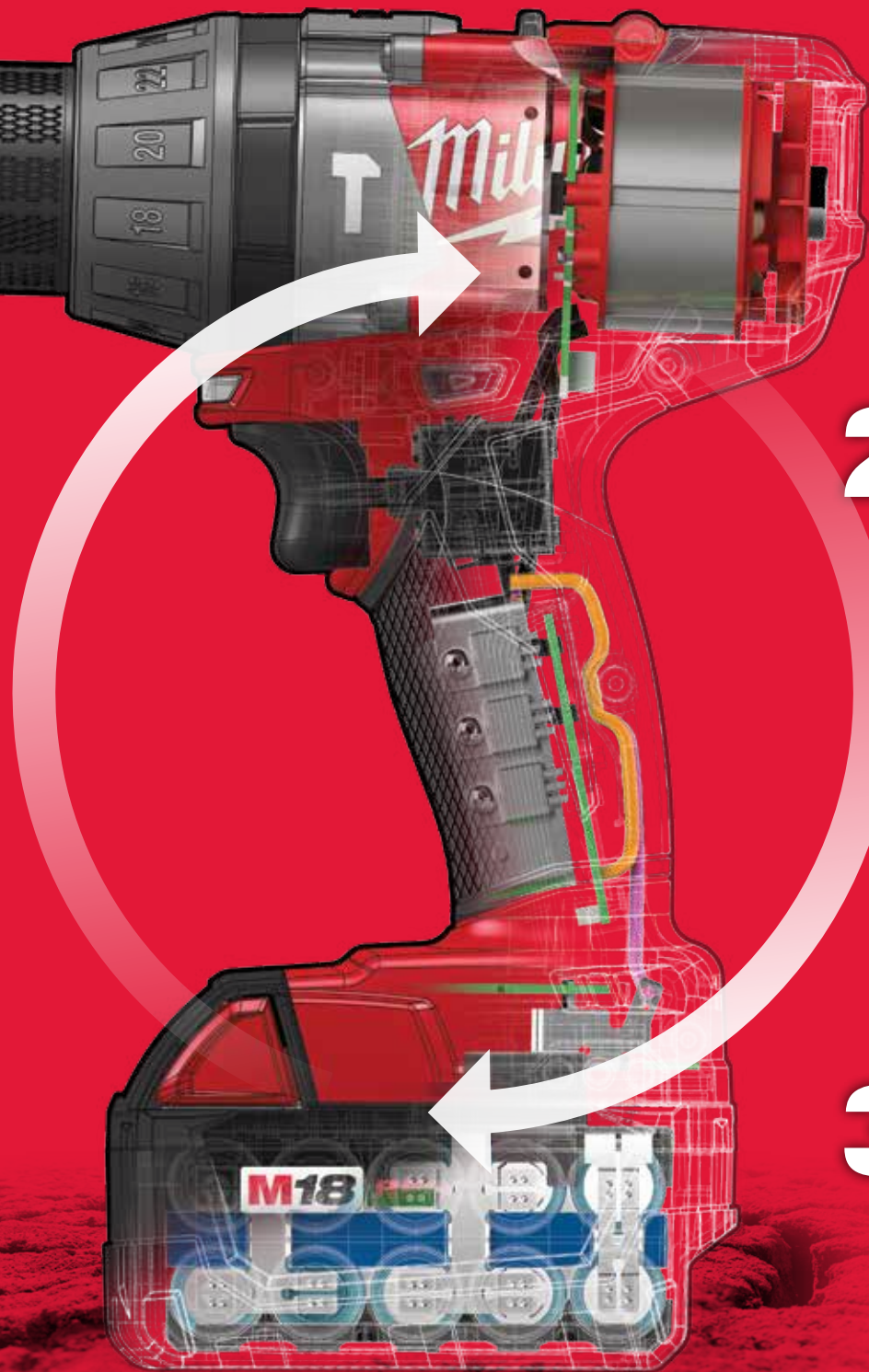


**M18**  
SYSTEM



# M18 FUEL™

DRIVEN TO OUTPERFORM.™



## 2 REDLINK PLUS™ INTELLIGENCE

The most advanced system of hardware and software in cordless power tool electronics today.

- Most Advanced Electronic System on the Market for Maximum Performance
- Total System Communication with Overload Protection Increases Tool Life



**REDLITHIUM-ION™**  
4.0/5.0/6.0/9.0Ah

## 3 REDLITHIUM-ION™ 4.0/5.0/6.0/9.0Ah BATTERY PACKS

Compatible with the entire M18™ system, it delivers more run-time, power and recharges than the competition.

- Maximum Motor Life
- Maximum Power
- Fuel Gauge Displays Remaining Charge
- Operates Below -18° C / 0° F





**M18 FUEL**  
DRIVEN TO OUTPERFORM.™

**M18 FUEL™ Magnetic Drill**

M18FMDP-0C (Tool Only)

**Specifications:**

Holding Force	900kg
RPM	400/600
Max Annular Cutting	38mm
Chuck Type	3/4" Weldon to 1/2" Chuck Adaptor
Height	395mm
Weight	13.38kg



**Includes:** (1) M18FMDP-0C (1) Carrying Case (1) 3/4" Weldon to 1/2" Chuck Adaptor (1) Chuck Key (1) Magnetic Lubrication Tank (1) Safety Strap (1) 1" Retractable Pilot Pin. (Battery and charger not included)

**M18 FUEL™ Hammer Drill Driver Kit**

M18FPD-502C (M18FPD-0 Tool Only)

**Specifications:**

Peak Torque	135Nm
RPM	0-550/ 0-2000
BPM	0-32,000
Chuck Type	13 mm Metal Single Sleeve
Length	197mm
Weight	2.56kg



**Includes:** (1) M18FPD-0 (2) M18B5 (1) M12-18FC (1) Side Handle (1) Belt Clip (1) Bit Holder (1) Carrying Case

**M18 FUEL™ 1/4" HEX Impact Driver Kit**

M18FID-502C (M18FID-0 Tool Only)

**Specifications:**

Torque	26/ 80/ 203/ 0-203Nm
RPM	850/ 2100/ 3000/ 0-3000
IPM	1800/ 2900/ 3700/ 0-3700
Chuck Type	1/4" HEX
Speed/Torque Control	4 Mode DRIVE CONTROL™
Weight	1.73kg



**Includes:** (1) M18FID-0 (2) M18B5 (1) M12-18FC (1) Belt Clip (1) Carrying Case

**M18 FUEL™ 1/2" Impact Wrench Kit w/ Pin Detent**

M18FIWP12-502C (M18FIWP12-0 Tool Only)

**Specifications:**

Fastening Torque	40/ 120/ 300Nm
RPM	1700/ 2000/ 2500/ 2000
IPM	2400/ 2600/ 3200/ 2600
Chuck Type	1/2" Square Drive
Weight	1.73kg



**Includes:** (1) M18FIWP12-0 w/ Pin Detent (2) M18B5 (1) M12-18FC (1) Belt Clip (1) Carrying Case

**Features & Benefits**

- POWERSTATE™ Brushless motor delivers maximum power and longer motor life
- REDLINK PLUS™ Intelligence provides optimised performance and overload protection
- Drills 40 x 20mm holes on 6mm plate on one charge (5.0Ah Battery)
- 38mm Annular cutter capacity and 13mm twist bit capacity



**Features & Benefits**

- Brightest LED workspace illumination
- POWERSTATE™ Brushless motor delivers up to 135Nm of torque
- REDLINK PLUS™ intelligence provides optimised performance and overload protection
- Individual battery cell monitoring optimises tool run time and ensures long term pack durability



**Features & Benefits**

- Mode 1 for precision work
- Mode 2 helps prevent damage to fasteners and material
- Mode 3 delivers maximum performance for the toughest applications
- Mode 4 is the optimum between precision work and maximum performance for self tapping applications



**Features & Benefits**

- Mode 1 for precision work
- Mode 2 helps prevent damage to fasteners and material
- Mode 3 delivers maximum performance for the toughest applications
- Mode 4 intelligently detects when the tool has impacted on a fastener for one second automatically shutting the tool down, reducing overdriving and damaging materials



### M18 FUEL™ 125mm Braking Grinder

M18CAG125XPDB-0 (Tool Only)

**Specifications:**

RPM	8500
Motor Type	POWERSTATE™ Brushless
Overload Protection	REDLINK PLUS™ Intelligence
Brake	RAPID STOP™
Length	387mm
Weight	1.72kg



**Includes:** (1) M18CAG125XPDB-0 (1) Type 27 Guard (1) AVS Side Handle Grinding Wheel Sold Separately. (Battery and charger sold separately)

### M18 FUEL™ 125mm Angle Grinder Kit

M18CAG125XPD-502C (M18CAG125XPD-0 Tool-Only)

**Specifications:**

RPM	8500
Motor Type	POWERSTATE™ Brushless
Overload Protection	REDLINK PLUS™ Intelligence
Switch Type	Deadman Paddle
Length	381mm
Weight	2.40kg



**Includes:** (1) M18CAG125XPD-0 (2) M18B5 (1) M12-18FC (1) Carrying Case

### M18 FUEL™ 26mm Rotary Hammer Kit

M18CH-502C (M18CH-0 Tool Only)

**Specifications:**

Blow Energy	2.7J
RPM	0-1400
BPM	0-4900
Max Drill Capacity	26mm
Tool Reception	SDS-Plus
Weight	2.7kg



**Includes:** (1) M18CH-0 (2) M18B5 (1) M12-18FC (1) Depth Rod (1) Side Handle (1) Carrying Case

### M18 FUEL™ 28mm Rotary Hammer Kit

M18CHP-502C (M18CHP-0 Tool Only)

**Specifications:**

Blow Energy	4.3J
RPM	0-1350
BPM	0-5000
Max Drill Capacity	28mm
Tool Reception	SDS-Plus
Weight	3.5kg



**Includes:** (1) M18CHP-0 (2) M18B5 (1) M12-18FC (1) Depth Rod (1) Side Handle (1) Carrying Case

### Features & Benefits

- RAPID STOP™ braking feature stops cutting discs in 1 second, flap discs in 1.3 seconds, and grinding discs in 1.5 seconds
- Deadman paddle switch - Work Safe
- Tool free burst resistant guard allows for quick and easy guard adjustment
- Debris guard prevents internal damage and increases tool life



### Features & Benefits

- Tool free burst resistant guard allows for quick and easy guard adjustment
- Full metal gear box delivers heavy duty durability
- Debris guard prevents internal damage and increases tool life
- Ergonomically designed body and anti-vibration side handle for user comfort



### Features & Benefits

- All metal direct drive delivers maximum tool life with minimal tool maintenance
- AVS, Anti-Vibration System, minimises vibration for maximum comfort
- FUEL™ Technology. Increased performance, durability and productivity
- POWERSTATE™ Brushless Motor provides 2.7J of blow energy, 0-1,400 rpm and 0-4,900 bpm



### Features & Benefits

- All metal direct drive delivers maximum tool life with minimal tool maintenance
- AVS, Anti-Vibration System, minimises vibration for maximum comfort
- FUEL™ Technology. Increased performance, durability and productivity
- POWERSTATE™ Brushless Motor provides 0-1,350 rpm and 0-5,000 bpm



**M18 FUEL**  
DRIVEN TO OUTPERFORM.™

**M18 FUEL™ Deep Cut Band Saw Kit**

M18CBS125-502C (M18CBS125-0 Tool Only)

**Specifications:**

Speed	0-116m/min
Cut Capacity	127mm x 127mm
Keyless Adjustable Shoe	Yes
Armor Technology	Yes
Hanging Hook	Yes
Weight	6.26kg



**Includes:** (1) M18CBS125-0 (2) M18B5 (1) M12-18FC (1) 14 TPI Bi-Metal Band Blade (1) Carrying Case

**M18 FUEL™ 165mm Circular Saw**

M18CCS55-0 (Tool Only)

**Specifications:**

Motor Type	POWERSTATE™ Brushless
RPM	0-5000
Blade Size/ Bore Size	165mm/15.88mm
Blade Guard/ Shoe Material	Magnesium
Depth of Cut (90°)	55mm
Weight	3.08kg



**Includes:** Skin Only Tool (Battery and Charger sold separately)

**M18 FUEL™ 184mm Circular Saw**

M18CCS66-0 (Tool Only)

**Specifications:**

Motor Type	POWERSTATE™ Brushless
RPM	0-5000
Blade Size/ Bore Size	184mm/ 15.88mm
Blade Guard/ Shoe Material	Magnesium
Depth of Cut (90°)	64mm
Weight	3.08 kg



**Includes:** (1) M18CCS66-0 (1) 184mm Circular saw blade (1) Rip fence. (Battery and Charger sold separately)

**M18 FUEL™ Sawzall® Recip Saw Kit**

M18CSX-502B (M18CSX-0 Tool Only)

**Specifications:**

Motor Type	POWERSTATE™ Brushless
SPM	0-3000
Stroke Length	29mm
Blade Clamp	QUIK-LOK® Universal
Clutch	Mechanical Clutch
Weight	3.41kg



**Includes:** (1) M18CSX-0 (2) M18B5 (1) M12-18FC (1) Contractor Bag

**Features & Benefits**

- POWERSTATE™ Brushless motor increases cutting speed and power
- CPT™ Constant Power Technology maintains cut speed in tough applications
- Jobsite Armor Technology™ provides long lasting rugged protection
- REDLINK PLUS™ Electronics



**Features & Benefits**

- Cast magnesium shoe, upper and lower guard provides a lightweight and durable base
- Powered by REDLITHIUM-ION™ Battery Technology providing superior pack construction, electronics and performance that delivers more run time and increased productivity
- Cut Line dust blower for increased visibility during cutting application.
- Rafter Hook for easy storage on the job



**Features & Benefits**

- Cast magnesium shoe, upper and lower guard provides a lightweight and durable base
- Powered by REDLITHIUM-ION™ Battery Technology providing superior pack construction, electronics and performance that delivers more run time and increased productivity
- Cut Line dust blower for increased visibility during cutting application
- Rafter Hook for easy storage on the job



**Features & Benefits**

- Powered by REDLITHIUM-ION™ Battery Technology providing superior pack construction, electronics and performance that delivers more run time and increased productivity
- Keyless adjustable shoe to customise tool to application
- Rafter Hook for secure storage on the job
- Integrated LED light for user visibility





### M18 FUEL™ 7/16" Hex High Impact Driver

M18CHIDH716-0 (Tool Only)

**Specifications:**

Fastening Torque	406Nm/ 677Nm
RPM	1200/1700
IPM	1700/2300
Switch Type	Variable speed trigger
Weight	2.5kg



**Includes:** Skin only tool. (Battery and Charger sold separately)

### Features & Benefits

- Superior performance delivers up to 677Nm of maximum drilling torque and maximum impact rate of 2,300 ipm
- 7/16" HEX Quick Changing allows for fast, secure insertion/removal of auger bits and socket adaptors.
- POWERSTATE™ Brushless motor runs cooler with no wearable components
- REDLINK PLUS™ Intelligence allows 2 fastening modes with Milwaukee's proprietary DRIVE CONTROL™ feature



### M18 FUEL™ 3/4" High Impact Wrench Kit w/ Friction Ring

M18CHIWF34-502C (M18CHIWF34-0 Tool Only)

**Specifications:**

Fastening Torque	508Nm/ 1016Nm
RPM	0-1200/0-1700
IPM	0-1700/0-2300
Switch Type	Variable speed trigger
Anvil Type	3/4" Square - Friction Ring
Weight	2.6kg



**Includes:** (1) M18CHIWF34-0 w/ Friction Ring (2) M18B5 (1) M12-18FC (1) Carrying Case

### Features & Benefits

- Superior performance delivers up to 1016Nm of maximum fastening torque and a maximum impact rate of 2,300ipm
- 3/4" anvil with friction ring for fast easy socket changes
- POWERSTATE™ Brushless Motor runs cooler with no wearable parts
- REDLINK PLUS™ Intelligence allows operator to choose between 2 fastening modes with Milwaukee's proprietary DRIVE CONTROL™ feature



### M18 FUEL™ 1/2" High Impact Wrench Kit w/ Friction Ring

M18CHIWF12-502C (M18CHIWF12-0 Tool Only)

**Specifications:**

Fastening Torque	135Nm/ 950Nm
RPM	425/1700
IPM	450/2300
Switch Type	Variable Speed Trigger
Anvil Type	1/2" Square - Friction Ring
Weight	2.6kg



**Includes:** (1) M18CHIWF12-0 w/ Friction Ring (2) M18B5 (1) M12-18FC (1) Carrying Case

### Features & Benefits

- Delivers up to 950Nm of maximum fastening torque with a maximum impact rate of 2,300ipm for superior performance
- 1/2" anvil with friction ring provides fast, easy socket changes
- Powered by REDLITHIUM-ION™ battery technology providing superior pack construction, electronics and performance that delivers more run time and increased productivity
- POWERSTATE™ brushless motor runs cooler with no wearable components



### M18 FUEL™ 1/2" High Impact Wrench Kit w/ Pin Detent

M18CHIWP12-502C (M18CHIWP12-0 Tool Only)

**Specifications:**

Fastening Torque	474Nm/ 813Nm
RPM	1200/1700
IPM	1700/2300
Switch Type	Variable speed trigger
Anvil Type	1/2" Square - Pin Detent
Weight	2.6kg



**Includes:** (1) M18CHIWP12-0 (2) M18B5 (1) M12-18FC (1) Carrying Case

### Features & Benefits

- Superior performance delivers up to 813Nm of maximum fastening torque and maximum impact rate of 2,300ipm
- 1/2" anvil with Pin Detent for maximum socket retention
- POWERSTATE™ brushless motor runs cooler with no wearable components
- REDLITHIUM-ION™ battery technology provides superior pack construction, electronics and performance



## BRUSHLESS

### M18™ Brushless Drill Driver

M18BLDD-0 (Tool Only)

**Specifications:**

Peak Torque	60Nm
RPM	0-450/0-1800
Chuck Capacity	13mm Metal Single Sleeve
Max Drilling (wood)	38mm
Max Drilling (steel)	13mm
Weight	2.0kg



**Includes:** Skin only tool. (Battery and Charger sold separately)

### M18™ Brushless Hammer Drill Driver

M18BLPD-0 (Tool Only)

**Specifications:**

Peak Torque	60Nm
RPM	0-450/ 0-1800
BPM	0-28800
Chuck Type	13mm Metal Single Sleeve
Max Drilling (Wood/Steel)	38mm / 13mm
Weight	2.0kg



**Includes:** Skin only tool. (Battery and Charger sold separately)

### M18™ 1/4" HEX Brushless Impact Driver

M18BLID-0 (Tool Only)

**Specifications:**

Torque	170Nm
RPM	0-2800
IPM	0-3600
LED Light	Yes
Length	137mm
Weight	1.7kg



**Includes:** Skin only tool. (Battery and Charger sold separately)

### Features & Benefits

- Optimised speed for faster drilling and fastening
- Bright LED workspace illumination
- Flexible battery system compatible with all Milwaukee® M18™ batteries



### Features & Benefits

- All-metal gear case and 13mm metal chuck for quick bit changes and bit retention
- Optimised speed for faster drilling and fastening
- 3 stage motor selector allows user to switch between 'rotary', 'screw drive' and 'percussion' quickly and easily



### Features & Benefits

- Compact impact driver measuring 137mm in length and 99mm head height
- Heavy duty full metal gearbox and gears for superior durability and maximum torque
- One-handed bit insert with retention lock





## HEAVY DUTY

### M18™ 82mm Planer

M18BP-0 (Tool Only)

**Specifications:**

Planing Width	82mm
RPM	14,000
Rebate Depth	10.7mm
Chip Ejection	Left or Right
Length	315mm
Weight	2.8kg



**Includes:** (1) M18BP-0 (2) TCT Blades (1) Edge/Bevel Guide (1) Dust Bag (Battery and charger sold separately)

### M18™ Compact Blower

M18BBL-0 (Tool Only)

**Specifications:**

Air Velocity	72m/sec
Air Volume	0.047m³/sec
Fan Speed	0-18,700
Speed	3 speed electronic switch
Trigger Type	Variable speed trigger
Weight	1.2kg



**Includes:** (1) M18BBL-0 (1) 200mm (8") Nozzle (1) 230mm (9") Nozzle Extension (1) Universal Inflator/Deflator attachment (8 - 14mm, 15 - 26mm) Tool Only (Battery and Charger sold separately)

### M18™ 13mm Hammer Drill Driver

M18BPD-0 (Tool Only)

**Specifications:**

Torque	60Nm
RPM	0-450/0-1800
BPM	0-28,000
Chuck Type	13mm Metal Single Sleeve
Motor type	4-Pole frameless motor
Weight	1.43 kg



**Includes:** Skin only tool. (Battery and Charger sold separately)

### M18™ Right Angle Drill

C18RAD-0 (Tool Only)

**Specifications:**

Peak Torque	20Nm
RPM	0-1500
Max. Drilling Capacity (steel)	10mm
Max. Drilling Capacity (wood)	28mm
Wood Screws	8mm
Weight	1.9kg



**Includes:** Skin only tool. (Battery and Charger sold separately)

### Features & Benefits

- Max depth adjustment knob of 0 - 2mm cut capacity in a single pass
- Depth adjustment knob with 20 locking positions at 0.1mm intervals
- Spring loaded kickstand prevents blade from marring the finished surface
- Bevel/Edge guide allows the user to make straight rebate and bevel cuts up to 45°



### Features & Benefits

- Universal inflator/deflator for easy setup or take down of most inflatable products
- Lock on switch reduces user fatigue
- Shock absorbing polymer
- Reinforced handle resists drops



### Features & Benefits

- REDLINK™ Intelligence for optimised performance and overload protection
- Robust design with improved ergonomics, more power, more output torque and increased speed
- 3 driving modes and 18 clutch settings to maximise productivity



### Features & Benefits

- 100mm compact head designed to fit in the tightest work areas
- Multi-position handle design allows for multiple hand positions and maximum comfort
- 10mm single sleeve ratcheting chuck provides maximum versatility and grip
- 10 + 1 electronic clutch enables complete control while fastening



# HEAVY DUTY

## M18™ 2 Speed 1/4" HEX Impact Driver

M18BID-0 (Tool Only)

### Specifications:

Fastening Torque	68/170Nm
RPM	0-2000/0-2750
IPM	0-2450/0-3450
Motor Type	4-Pole Frameless Motor
Battery Type	REDLITHIUM-ION™
Weight	1kg



**Includes:** Skin only tool. (Battery and Charger sold separately)

## M18™ Right Angle Impact Driver

M18BRAID-0 (Tool Only)

### Specifications:

Torque	41/81Nm
IPM	0-2400/0-3400
RPM	0-1500/0-2250
Tool Reception	1/4" Hex Quick Chuck
Length	308mm
Weight	1.1kg



**Includes:** Skin only tool. (Battery and Charger sold separately)

## M18™ 1/2" Impact Wrench

M18BIW12-0 (Tool Only)

### Specifications:

Fastening Torque	240Nm
RPM	0-2450
IPM	0-3350
Anvil Size & Type	1/2" Pin Detent
Length	155mm
Weight	1kg



**Includes:** Skin only tool. (Battery and Charger sold separately)

## M18™ Heavy Duty 125mm Angle Grinder

HD18AG125-0 (Tool Only)

### Specifications:

Disc Diameter	125mm (5")
RPM	10,000
Overload Protection	REDLINK™
Spindle Thread	M14
Guard Adjustment	Tool-free
Weight	1.70 kg



\*Grinding disc not included



**Includes:** Skin only tool. (Battery and Charger sold separately)

### Features & Benefits

- Built in LED light illuminates work surface
- 2-SPEED DRIVE CONTROL™ to electronically adjust speed/power while working with different materials and fasteners
- REDLINK™ Intelligence provides optimised performance and overload protection with 2-Mode DRIVE CONTROL™
- Belt hook for easy work belt storage



### Features & Benefits

- Compact head design allows greater access for close quarter applications
- Multi position head can be adjusted to 8 different positions.
- 1/4" Hex quick chuck accepts 1" bits for extreme close-quarter situations
- Extended paddle switch allows use in multiple gripping position



### Features & Benefits

- Heavy duty full metal gearbox for superior durability and maximum torque
- Features a 1/2" Pin Detent anvil for maximum socket retention
- Individual battery cell monitoring for optimised tool runtime
- All metal reversible belt clip for temporary storage



### Features & Benefits

- Lock off paddle switch design for ease of use
- Full metal gear box delivers heavy duty durability
- Multi position side handle for ease of use
- Debris baffles prevents internal damage and increasing tool life





## HEAVY DUTY

### M18™ Heavy Duty Straight Grinder

HD18SG-0 (Tool Only)

#### Specifications:

Collet Diameter	6mm
Speed (gear 1)	17,500
Speed (gear 2)	21,500
Battery Type	REDLITHIUM-ION™
Overload Protection	REDLINK™
Weight	2.3 kg



**Includes:** (1) 6mm Collet (1) 17mm Wrench (1) 15mm Wrench  
(Battery and Charger sold separately)

### M18™ 16mm SDS Plus Rotary Hammer

M18BH-0 (Tool Only)

#### Specifications:

Blow Energy	1.2J
RPM	0-1300
Mode	2
Max Drilling Capacity	16mm
Tool Reception	SDS-Plus
Weight	2.50kg



**Includes:** (1) M18BH-0 (1) Depth Rod (1) Side Handle  
(Batteries and charger sold separately)

### M18™ 22mm SDS-Plus Rotary Hammer

HD18H-0 (Tool Only)

#### Specifications:

Blow Energy	2.4J
RPM	0-1400
Mode	3
Max Drilling Capacity	22mm
Tool Reception	SDS-Plus
Weight	2.81 kg



**Includes:** (1) HD18H-0 (1) Depth Rod (1) Side Handle (1) Carrying Case  
(Batteries and charger sold separately)

### M18™ Heavy Duty 165mm Circular Saw

HD18CS-0 (Tool Only)

#### Specifications:

Blade Size/Bore Size	165mm / 15.88mm
RPM	0-3500
Depth of Cut (90°)	55mm
Electronic Brake	Yes
Overload Protection	Yes
Weight	3.10kg



**Includes:** (1) HD18CS-0 (1) 165mm Circular Saw Blade (1) Rip Fence  
(Battery and Charger sold separately)

#### Features & Benefits

- Long slender spindle neck for better access to awkward spaces
- Full metal gear case for maximum durability
- Digital electronic 2-speed for optimum use of consumables
- Maximised airflow for cool running for extended periods



#### Features & Benefits

- Two mode operation. Rotary Hammer and Rotary only
- Lightweight and compact with LED light
- Drills more than 100 (10mm) holes powered by a 3.0Ah battery
- The electro-pneumatic design allows for drilling up to 16mm



#### Features & Benefits

- (AVS) Anti Vibration System for maximum comfort
- Variable Position Chisel Stop for customised bit position
- (DPM) Digital Power Management prevents damage in harsh conditions
- Mechanical clutch, protection when the bit binds



#### Features & Benefits

- Heavy duty magnesium guards for maximum durability
- Electronic brake to safely stop blade quickly for increased productivity
- Aircraft aluminium shoe provides greater accuracy
- Battery fuel gauge displays remaining runtime



## HEAVY DUTY

### M18™ Heavy Duty Metal Saw Kit

HD18MS-402B (HD18MS-0 Tool Only)

#### Specifications:

Blade Size	135mm
RPM	3600
Arbor Size	20mm
Blade Guard Type	Polycarbonate
Shoe Type	Stainless steel
Weight	2.63kg



**Includes:** (1) HD18MS-0 (2) M18B4 (1) M12-18FC (1) Contractor Bag

### M18™ Heavy Duty SAWZALL®

M18BSX-0 (Tool Only)

#### Specifications:

Stroke Length	28.6mm
SPM	0-3000
Anti-Vibration	Counter Balance Mechanism
Blade Clamp	Lever action QUIK-LOK™
Length	457mm
Weight	3.4 kg



**Includes:** Skin only tool. (Battery and Charger sold separately)

### M18™ HACKZALL® Recip Saw

C18HZ-0 (Tool Only)

#### Specifications:

SPM	0-3000
Stroke Length	20mm
Blade Change	FIXTEC™ Clamp
LED Light	Yes
Length	375mm
Weight	2.6kg



**Includes:** Skin only tool. (Battery and Charger sold separately)

### M18™ Heavy Duty Jigsaw

HD18JS-0 (Tool Only)

#### Specifications:

Stroke Length	25mm
RPM	0-2200
Cutting depth (wood)	135mm
Cutting depth (steel)	10mm
Mitre Cutting Angle	45°
Weight	3.5kg



**Includes:** (1) Sliding Shoe (1) Blade (Battery and Charger sold separately)

### Features & Benefits

- Exclusive 4-pole frameless motor delivers optimum efficiency
- Compact low profile design for easy handling and increased control
- Extra large cut guide. Impact resistant window and LED light for more accurate cuts
- Tool free depth adjustment for customised applications



### Features & Benefits

- REDLINK™ Electronic Intelligence with the most advance overload protection
- Milwaukee® patented QUIK-LOK™ blade clamp for fast and easy keyless blade change
- 28.6mm stroke length & 3,000 strokes per minute for extremely fast cutting
- Counter balance mechanism to reduce vibrations- 15.2 m/s<sup>2</sup> in wooden beams



### Features & Benefits

- Dual gear counter balance reduces vibration and increases tool life
- Milwaukee® high performance compact one handed use hacksaw measuring only 375mm in length makes it ideal for working within confined spaces
- Milwaukee® patented FIXTEC™ clamp for fast keyless blade change
- Complete with Milwaukee's Li-Ion Digital Power Management system that protects tool and battery in all applications delivering industry leading durability



### Features & Benefits

- Milwaukee® patented FIXTEC™ clamp for fast and easy keyless blade change
- Oversized blade roller support for increased blade stability
- Keyless bevel facility on base plate allowing adjustments of 0-45 degrees
- 5 stage pendulum action for increased performance





## HEAVY DUTY

### M18™ 2 Speed Cordless Grease Gun Kit

M18GG-301B (M18GG-0 Tool Only)

#### Specifications:

Operating Pressure	10,000psi
Barrel Capacity	450g Cartridge
Flow Rate (Free Flow)	284g/min
Hose Length	1220cm
Tool Length	381mm
Weight	3.41 kg



**Includes:** (1) M18GG-0 (1) M18BX (1) M12-18FC (1) Contractor Bag

### M18™ 216mm (8") Slide Mitre Saw

M18SMS216-0 (Tool Only)

#### Specifications:

Motor Type	2-pole Frameless
RPM	2700
Bevel Capacity	-2 to 48°
Blade/Bore Size	216mm / 30mm
Max Cut Capacity (90°)	270mm x 60mm
Weight	13.9kg



**Includes:** (1) M18SMS216-0 (1) 48T Circular Saw Blade (Batteries and Charger sold separately).

### M18™ Cordless 18G Single Cut Shear

M18BMS-0 (Tool Only)

#### Specifications:

SPM	0-2500
Cutting Speed	8.5m/min
Min. Cut Diameter	76mm
Cut Capacity (steel/ stainless)	18g/ 20g
Length	410mm
Weight	1.87 kg



**\*Not designed to cut Aluminium.**

**Includes:** Skin only tool. (Battery and Charger sold separately)

### M18™ Cordless Multi-tool

M18BMT-0 (Tool Only)

#### Specifications:

Speed Settings	12 Speed
Oscillation Speed	11000 - 18000 opm
Oscillation Angle	3.4°
Tool Reception	Tool Free
Length	302mm
Weight	1.20 kg



**Includes:** (1) M18BMT-0 (1) Universal Adaptor (1) Wood Cutting Blade (1) Sanding Pad (5) Assorted Sanding Sheets (Battery and Charger sold separately)

#### Features & Benefits

- Precision injection through pre-set grease counter dial
- Flexible hose offers greater access to difficult to reach fittings
- Air bleeder valve for quick priming
- Lock-on/ Lock-off trigger delivers added user convenience



#### Features & Benefits

- Milwaukee® 2-pole frameless motor delivers 2700 rpm for fast cutting
- Heavy duty case base and fence ensures durability and accuracy
- Dual vertical steel rails with linear bearings for smooth sliding action
- Mitre release system for quick cutting adjustments



#### Features & Benefits

- 360° Tool-free rotating head, can be used where hand snips have been needed
- Ergonomic body design provides inline wrist design for easy use
- Belt clip for quick and easy storage
- Cut capacity up to 1.2mm in steel and 0.95mm in stainless steel



#### Features & Benefits

- All metal gear case. Provides added jobsite durability
- Tool free blade changing for faster changes and no tools to misplace
- Built in LED light for user visibility
- Powerful motor delivers 11,000 to 18,000 Opm



# HEAVY DUTY

## M18™ Caulk & Adhesive 310ml Gun Kit

C18PCG310-201B (C18PCG-0 Tool Only)

### Specifications:

Pushing Force	4500Nm
Speed	0-212.54 CPM
Speed Settings	6
Variable Speed Trigger	Yes
Motor	Milwaukee® 4-Pole Motor
Weight	2.23kg



**Includes:** (1) C18PCG-0 (1) M18B2 (1) M12-18C (1) Contractor Bag (1) Additional 600ml Aluminium Conversion Kit (p/n: 48081093) (1) Additional 600ml Clear Conversion Kit (p/n: 48081094)

## M18™ 600ml Alum Barrel Caulk Gun Kit

C18PCG600A-201B (C18PCG-0 Tool Only)

### Specifications:

Pushing Force	4500Nm
Speed	0-212.54 CPM
Speed Settings	6
Variable Speed Trigger	Yes
Motor	Milwaukee® 4-Pole Motor
Weight	2.3kg



**Includes:** (1) C18PCG-0, (1) M18B2 (1) M12-18C (1) Contractor Bag (1) Additional 600ml Clear Conversion Kit (P/N: 48081094)

## M18™ Heavy Duty Wet/Dry Vacuum

HD18VC-0 (Tool Only)

### Specifications:

Capacity	7.5 Litres
Max Air Flow	45 cu. ft/min
Sealed Suction in Water	813mm
Hose Length (parked)	550mm
Hose Length (extended)	1800mm
Weight	4.2kg



**Includes:** Skin Only Tool. (Battery and Charger sold separately)

### Features & Benefits

- Anti drip feature prevents unwanted dripping when trigger is released
- Constant flow technology
- Large robust plunger design ensures constant flow
- Rotating quick change collar for customised applications



### Features & Benefits

- Anti drip feature prevents unwanted dripping when trigger is released
- Constant flow technology
- Large robust plunger design ensures constant flow
- Rotating quick change collar for customised applications



### Features & Benefits

- Powerful motor to provide strong suction and air flow
- Tool box design for easy transport and storage
- On-board accessory and hose storage
- Ideal for both wet and dry applications
- HEPA Filter





## POWER PACKS

### M18 FUEL™ Power Pack 2A

M18FPP2A-502C

**Includes:**

- (1) M18FPD-0
- (1) M18FID-0
- (2) M18B5
- (1) M12B \*BONUS\*
- (1) M12-18FC
- (1) Side Handle
- (1) Belt Clip
- (1) Bit Holder
- (1) Carrying Case



\*Bonus  
M12B

### M18 FUEL™ Power Pack 2C

M18FPP2C-502C

**Includes:**

- (1) M18FPD-0
- (1) M18FIWP12-0
- (2) M18B5
- (1) M12-18FC
- (1) Side Handle
- (2) Belt Clip
- (1) Bit Holder
- (1) Carrying Case



### M18 FUEL™ Power Pack 3C

M18FPP3C-502B

**Includes:**

- |                      |                      |
|----------------------|----------------------|
| • (1) M18FPD-0       | • (1) Bit Holder     |
| • (1) M18FID-0       | • (1) Belt Clip      |
| • (1) M18CAG125XPD-0 | • (1) Contractor bag |
| • (2) M18B5          |                      |
| • (1) M12-18FC       |                      |
| • (1) Type 27 Guard  |                      |
| • (1) Spanner Wrench |                      |
| • (1) Side Handle    |                      |



### M18 FUEL™ Power Pack 6C

M18FPP6C-502B

**Includes:**

- |                      |                          |
|----------------------|--------------------------|
| • (1) M18FPD-0       | • (2) Side Handle        |
| • (1) M18FID-0       | • (1) Bit Holder         |
| • (1) M18CAG125XPD-0 | • (2) Belt Clip          |
| • (1) M18CCS55-0     | • (1) Recip Saw Blade    |
| • (1) M18CSX-0       | • (1) Circular Saw Blade |
| • (1) M18TLED-0      | • (1) Rip Fence          |
| • (2) M18B5          | • (1) Contractor Bag     |
| • (1) M12-18FC       |                          |
| • (1) Type 27 Guard  |                          |
| • (1) Spanner Wrench |                          |



\*Bonus  
M12B4

## POWER PACKS

### M18™ Brushless Power Pack 2C

M18BLPP2B-402C

**Includes:**

- (1) M18BLPD-0
- (1) M18BLID-0
- (2) M18B4
- (1) M12-18FC
- (1) Carrying Case



### M18™ GEN2 Brushed Power Pack 2C

M18BPP2C-303B

**Includes:**

- (1) M18BPD-0
- (1) M18BID-0
- (1) M12-18C
- (3) M18BX
- (1) Contractor Bag



### M18™ GEN2 Brushed Power Pack 2D

M18BPP2D-202C

**Includes:**

- (1) M18BPD-0
- (1) M18BID-0
- (1) M12-18C
- (2) M18B2
- (1) Carrying Case



### M18™ GEN2 Brushed Power Pack 3A

M18BPP3A-303B

**Includes:**

- (1) M18BPD-0
- (1) M18BID-0
- (1) HD18H-0
- (1) M12-18C
- (3) M18BX
- Contractor Bag





## POWER PACKS

### M18™ GEN 2 Brushed Power Pack 6A

M18BPP6A-303B

#### Includes:

- (1) M18BPD-0
- (1) M18BID-0
- (1) M18TLED-0
- (1) HD18AG-0
- (1) HD18CS-0
- (1) C18HZ-0
- (3) M18BX
- (1) M12-18C
- (1) Contractor Bag





# LIGHTING

## M18™ TRUEVIEW™ LED Stand Light

M18SAL-0

### Specifications:

Height	120cm to 220cm height adjustment
Adjustable Head	230° Vertically, 240° Horizontally
Footprint Size	660mm
High Setting (5.0Ah battery)	2000 Lumens/4hr battery life
Medium Setting (5.0Ah battery)	1300 Lumens/6 hr battery life
Low Setting (5.0Ah battery)	850 Lumens/10 hr battery life



**Includes:** Skin only tool. (Battery and Charger sold separately)

### Features & Benefits

- Three light output modes for optimal brightness and runtime
- High definition output with true colour, even beam, and natural light
- Low battery indicator alerts users when the battery is nearing end of charge
- Impact resistant, reinforced legs



## M18™ High Performance Area Light

M18HAL-0

### Specifications:

Light Setting	3 light output mode
High Setting (5.0Ah battery)	3000 Lumens / 2 hr battery life
Medium Setting (5.0Ah battery)	1500 Lumens/ 4 hr battery life
Low Setting (5.0Ah battery)	650 Lumens/ 8 hr battery life
Light Head Rotation	240°
Integrated Keyholes	Yes



**Includes:** Skin only tool. (Battery and Charger sold separately)

### Features & Benefits

- Brighter than a 500W halogen flood light
- Three light output modes for optimal brightness and runtime
- Durable roll cage protects light head
- High definition output with true colour, even beam, and natural light
- 240V power adapter for infinite power supply



## M18™ LED Lantern/Flood Light

M18LL-0

### Specifications:

Lumens (Low)	70
Lumens (High)	700
Runtime (4.0Ah)	9 hrs (High)
Battery Type	REDLITHIUM-ION™
Weight	0.55 kg



**Includes:** Skin only tool. (Battery and Charger sold separately)

### Features & Benefits

- 180° - 360° adjustable beam for customised lighting solution
- 2.1A USB charger to charge tablets, phones and other electronic devices
- Rugged design featuring impact resistant lens and IPX 4 rating
- Four light settings to customise to task



## M18™ LED Inspection Light

M18IL-0

### Specifications:

Battery Type	REDLITHIUM-ION™
Lumens (Low)	150
Lumens (High)	300
Runtime (4.0Ah)	22hrs (High)
Weight	0.49 kg



**Includes:** Skin only tool. (Battery and Charger sold separately)

### Features & Benefits

- TRUEVIEW™ - High definition lighting solution
- Forward and backward pivoting head that offers 180° of coverage
- Rugged design with a chemical resistant body
- 2 adjustable metal hooks for customised hanging options



# LIGHTING

## M18™ LED Area Light

M18AL-0

### Specifications:

Light Type	8 LED
Light Settings	2 Mode
Lumens	1,100
Lux	1,300
Length	222mm
Weight	1.6 kg



**Includes:** Skin only tool. (Battery and Charger sold separately)

### Features & Benefits

- Up to 8 hours run time on a 4.0Ah REDLITHIUM-ION™ battery
- Octagonal roll cage for customised light positioning
- Impact resistant lens
- Multiple hanging features: conduit, keyhole and crossbar



## M18™ LED Work Light

M18TLED-0

### Specifications:

Light Type	LED
Lumens	99
Hands Free	Integrated Hook
Head Rotation	90°
Battery Type	REDLITHIUM-ION™
Weight	0.32 kg



**Includes:** Skin only tool. (Battery and Charger sold separately)

### Features & Benefits

- Durable sealed aluminium head
- 90° Rotating head for flexible focused illumination
- Integrated hook for hands free work



# LIFESTYLE

## M18™ Radio Charger

M18RC-0 (Tool Only)

### Specifications:

Radio Preset	FM (5), AM (5)
Frequency Response	80Hz- 20Hz
USB Charger output	2.1 Amp
Charge time (4.0Ah)	70 min
Bluetooth®	Yes
Weight	7.70 kg



**Includes:** (1) M18RC-0 (1) Auxiliary Input Cord (2) AAA Batteries.  
(Battery sold separately)

## M18™ Digital Jobsite Radio DAB+

M18JSRDAB+-0 (Tool Only)

### Specifications:

Radio Preset	5 DAB+ and 5 FM Station presets
USB Charger Output	2.1 Amp
Battery life (5.0Ah)	12 Hours
AUX Cable	Yes
AC Outlet	Yes
Radio Signal	DAB+ and FM



**Includes:** (1) M18JSRDAB+-0 (1) Auxiliary Input Cord (2) AAA Batteries  
(Battery and Charger sold separately)

## M18™ Jobsite Radio

M18JSR-0 (Tool Only)

### Specifications:

Radio Pre-Set	10 station preset
USB Charger Output	2.1 Amp
Battery life (5.0Ah)	12 Hours
AUX Cable	Yes
AC Outlet	Yes
Radio Signal	AM/FM



**Includes:** (1) M18JSR-0 (1) Auxiliary Input Cord (2) AAA Batteries  
(Battery and Charger sold separately)

## M18™ Jobsite Fan

M18AF-0 (Tool Only)

### Specifications:

Air Volume	0-284cfm
RPM	1370/ 1900/ 2350
Air Velocity	0-29kmh
Adjustable Head	120° (9 positions)
Key Hole Hanger	Yes
Weight	2.32 kg



**Includes:** (1) M18AF-0 (1) AC Adaptor  
(Battery and Charger sold separately)

## Features & Benefits

- Shock absorbing metal handles
- Reinforced roll cage for extra protection
- Weather sealed auxiliary compartment for small belongings
- Customisable equalizer and 10-station preset



## Features & Benefits

- Shock absorbing end caps and metal speaker grill protects from drops, water, and debris on the jobsite
- Integrated handles allow for easy transport and storage
- Weather sealed device compartment
- Dual speakers with passive radiators deliver loud, clear sound with deep, accurate bass



## Features & Benefits

- Shock absorbing end caps and metal speaker grill protects from drops, water, and debris on the jobsite
- Integrated handles allow for easy transport and storage
- Weather sealed device compartment
- Dual speakers with passive radiators deliver loud, clear sound with deep, accurate bass



## Features & Benefits

- Powerful airflow system that circulates over 12 metres
- Provides up to 17 hours of runtime on a REDLITHIUM-ION™ 5.0Ah battery
- AC adaptor included for extended runtime, if required
- Four keyhole hangers and two hanging holes allows for multiple hanging positions





# BATTERIES & CHARGERS

## M18™ 9.0Ah High Demand REDLITHIUM-ION™ Battery

M18B9

### Specifications:

Battery Type	REDLITHIUM-ION™
Electronics	REDLINK™ Intelligence
Battery Fuel Gauge	Yes
Warranty	2 years



### Features & Benefits

- All new Lithium-ion cell technology and ground up redesign, up to 5X more run time, Up to 35% more power and runs 60% cooler.
- REDLINK™ intelligence electronics provides optimised performance and overload protection.
- A battery technology that has been designed specifically for High Demand applications
- Can be used on any M18™ Milwaukee power tool, no lock outs.

\*Tested against M18BX

## M18™ 6.0Ah Extended Capacity REDLITHIUM-ION™ Battery

M18B6

### Specifications:

Battery Type	REDLITHIUM-ION™
Electronics	REDLINK™ Intelligence
Battery Fuel Gauge	Yes
Warranty	2 years



### Features & Benefits

- All new Lithium-ion cell technology and ground up redesign, up to 3X more run time, Up to 20% more power and 2X more life.
- REDLINK™ intelligence electronics provides optimised performance and overload protection.
- A battery technology that has been designed specifically for High Demand applications
- Can be used on any M18™ Milwaukee power tool, no lock outs.

\*Tested against M18BX

## M18™ 5.0Ah Extended Capacity REDLITHIUM-ION™ Battery

M18B5

### Specifications:

Battery Type	REDLITHIUM-ION™
Electronics	REDLINK™ Intelligence
Battery Fuel Gauge	Yes
Warranty	2 years
Weight	0.72 kg



### Features & Benefits

- REDLINK™ Intelligence. Provides optimised performance and overload protection
- Best in class construction. Offers long lasting performance and durability
- Fuel gauge on board. Displays remaining run time for less down time on the job
- All weather performance. Delivers fade free power in extreme jobsite conditions

## M18™ 4.0Ah Extended Capacity REDLITHIUM-ION™ Battery

M18B4

### Specifications:

Battery Type	REDLITHIUM-ION™
Electronics	REDLINK™ Intelligence
Battery Fuel Gauge	Yes
Warranty	2 years
Weight	0.72 kg



### Features & Benefits

- REDLINK™ Intelligence. Provides optimised performance and overload protection
- Temperature Management system to keep battery at ideal temperature
- Individual Cell Monitoring for optimal charge and discharge for maximum battery life
- Discharge Protection prevents cell damage from over-discharging

**BATTERIES & CHARGERS**

**M18™ 3.0Ah REDLITHIUM-ION™ Battery**

M18BX

**Specifications:**

Battery Type	REDLITHIUM-ION™
Electronics	REDLINK™ Intelligence
Battery Fuel Gauge	Yes
Warranty	2 years
Weight	0.69 kg



**Features & Benefits**

- Overload protection to prevent battery abuse
- Temperature Management system to keep battery at ideal temperature
- Individual Cell Monitoring for optimal charge and discharge for maximum battery life
- Discharge Protection prevents cell damage from over-discharging

**M12™ M18™ Rapid Charger**

M12-18FC

**Specifications:**

Voltage	12V & 18V
Electronics	REDLINK™ Intelligence
Charge Type	Sequential charging
Warranty	2 years
Weight	0.77 kg



**Includes:** (Battery sold separately)

**Features & Benefits**

- Charges all Milwaukee® batteries up to 40% faster\*
- Charges all M12™ and M18™ batteries
- REDLINK™ intelligence communicates directly with the battery
- REDLINK™ monitors cell voltage and temperature

*\*compared to previous models*



**M18™ Six Pack Charger**

M1418C6

**Specifications:**

Compatibility	All M18™ batteries
Charge Time (4.0Ah)	90 min
Charge Time (3.0Ah)	60 min
Charge Time (2.0Ah)	45 min
Charge Time (1.5Ah)	30 min
Weight	2.4 kg



**Includes:** (Battery sold separately)

**Features & Benefits**

- Reduce downtime, increase productivity
- Charges up to six batteries sequentially
- Convenient carrying handle
- Isolating switch



**M12™ M18™ Rapid Charge Station**

M12-18C3

**Specifications:**

Compatibility	All M12™ & M18™ batteries
Charge Time M12™/M18™:	
4.0Ah	63 min / 74 min
3.0 Ah	48 min / 62 min
2.0Ah	33 min / 40 min
1.5Ah	28 min / 37min
Weight	4.7 kg



**Includes:** (Battery sold separately)

**Features & Benefits**

- Charges three batteries simultaneously for heavy demand
- Reduce downtime, increase productivity
- Convenient carrying handle
- Integrated hang holes allow charger to be mounted vertically









**Milwaukee**

Nothing but **HEAVY DUTY.**





## **CORDED POWER TOOLS**

Milwaukee® Power Tools are “Nothing but HEAVY DUTY”. Our extensive range of corded power tools include drills, rotary hammers, woodworking, polishers, grinders, breakers, wall chasers and impact wrenches, engineered for professional users to get the job done better, faster, reliably and safely.



## DRILLS/SCREWGUNS

### 1/4" 725W Screwgun

TKSE2500Q

#### Specifications:

Power Input	725W
Torque	25Nm
No Load Speed	0-4000rpm
Drilling Speed (full load)	0-2500rpm
Drive Size	6.35mm (1/4")
Working Radius	23 mm



**Includes:** (1) 4m Quik-Lok™ Cable (1) Bit Holder (1) Belt Clip

#### Features & Benefits

- Combination deck and drywall gun
- Powerful 725W motor, 0 - 2500 rpm, variable speed control
- Self-drilling fastener screwdriver with 25Nm torque for tapping screws
- Adjustable, accurate 'snap-on' depth setting nose
- Quiet snap-action clutch
- Metal gear case, diaphragm and ergonomic tactile grip



### 13mm 850W Hammer Drill

PD2E22R

#### Specifications:

Power Input	1010W
No Load Speed 1st / 2nd Gear	0-1000 / 0-3200rpm
Full Load Speed 1st / 2nd Gear	0-680 / 0-2100rpm
Torque	56 / 30 Nm
Drill Capacity (Concrete / Stone / Steel / Wood)	20 / 22 / 13 / 40mm
Chuck/Chuck Type	13mm / Keyless
Handle Positions	360°



**Includes:** (1) Depth Gauge (1) Carrying Case

#### Features & Benefits

- Powerful 850W motor
- AVS Anti-Vibration System
- 2-speed gearbox
- 13mm Ratcheting Metal Chuck
- 2-Mode Operation Drill/Hammer Drill

### 13mm 950W Drill

HDE13RQX

#### Specifications:

Power Input	950 W
Torque	94Nm
No Load Speed	0-850rpm
Full Load Speed	0-525rpm
Chuck/Chuck Type	13mm/Keyless
Weight	2.0kg



**Includes:** (1) 4m Quik-Lok™ Cable (1) Side Handle

#### Features & Benefits

- Powerful 950W motor, 0 - 850 rpm, variable speed control
- FIXTEC™ Automatic Spindle Lock
- Lightweight and powerful, delivers 94Nm torque
- Metal Gear Case
- Ergonomic tactile grip and two finger trigger
- Soft grip and ergonomic handle design



### 13mm 1010W Hammer Drill

PD2E24RS (P/N:4933390200)

#### Specifications:

Power Input	1010W
No Load Speed 1st / 2nd Gear	0-1450 / 0-3400rpm
Full Load Speed 1st / 2nd Gear	0-980 / 0-2300rpm
Torque 1st/2nd Gear	54/30Nm
Chuck/Chuck Type	13mm / Keyless
Drill Capacity (Concrete/ Stone/ Steel/ Wood)	20/ 24/ 16/ 40mm



**Includes:** (1) Depth Gauge (1) Carrying Case

#### Features & Benefits

- Powerful 1010W motor
- AVS Anti-Vibration System
- 2-speed synchromesh gears
- Preselection of speed via dial control to suit application
- Metal Gear Case and Safety Clutch
- No Load Speed limitation





## DRILLS/SCREWGUNS

### 32mm 1050W Morse Taper Drill MK 3mm

B4-32 (493380519)

#### Specifications:

Power Input	1050W
No Load Speed 1st / 2nd / 3rd / 4th Gear	220/260/350/420rpm
Full Load Speed 1st / 2nd / 3rd / 4th Gear	115/160/190/260rpm
Torque	200Nm
Drill Capacity (Steel/ Aluminium/ Wood)	32/64/52 mm
Tool Reception	MK 3mm



#### Features & Benefits

- Powerful 200Nm torque
- 4-speed gearbox, precise speed adaptation
- Cone spindle with morse taper
- Cross-handle and breast plate
- Suitable for stationary application with magnetic drill stand

**Includes:** (1) Drift Key

## ROTARY HAMMERS & BREAKERS

### 26mm SDS-Plus 2-Mode Rotary Hammer

PFH26

#### Specifications:

Power Input	725W
Max. Drilling Capacity in Concrete	26mm
Max. Drilling Capacity in Wood/Steel	30 / 13 mm
Full Load Hammer Action	0-4500 bpm
Vibration Level (3-axis) drilling into concrete / chipping	13.5 / 8.5 m/s <sup>2</sup>
Weight	2.4kg



**Includes:** (1) 4m Cable (1) (1) Side handle with Metal Depth Gauge (1) Carrying Case

#### Features & Benefits

- Most compact, slimline hammer available in its class
- Unmatched performance with 2.4J blow energy and 4500 bpm
- Lowest vibration at drilling into concrete: only 13.5 m/s<sup>2</sup>
- Extreme Milwaukee® durability thanks to integrated metal block technology
- Forward/Reverse modes
- Hammer stop function
- Safety clutch



### 25mm SDS-Plus 3-Mode Rotary Hammer

PH27

#### Specifications:

Power Input	800W
Max. Drilling Capacity in Concrete	25mm
Max. Drilling Capacity in Wood/Steel	28/13mm
Blow Energy	2.8J
Weight	2.6kg



**Includes:** (1) Side Handle (1) Metal Depth Gauge (1) Carrying Case

#### Features & Benefits

- Powerful and lightweight design
- 800W motor delivers 0-1600 RPM and 0-4800 bpm
- Mechanical clutch protects the tool and user when bit binds up
- 3 Mode Operation: Rotary Hammer, Hammer Only and Rotation Only for maximum versatility
- Forward/Reverse feature



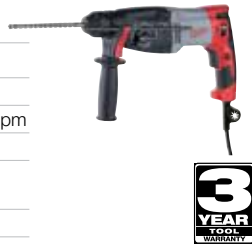
# ROTARY HAMMERS & BREAKERS

## 28mm SDS-Plus 3-Mode Rotary Hammer

PH28

### Specifications:

Power Input	820W
Max. Drilling Capacity in Concrete	28mm
Max. Drilling Capacity in Wood / Steel	30/13mm
Full Load Hammer Action	0 – 4000bpm
Blow Energy	3.3 J
Vibration Level (3-axis) Drilling into Concrete / Chipping	14.5 m/s <sup>2</sup>
Weight	2.7kg



**Includes:** (1) 4m Cable (1) Side Handle with Metal Depth Gauge (1) Carrying Case

## 28mm SDS Plus 3-Mode Rotary Hammer

PLH28E

### Specifications:

Power Input	800W
Max. Drilling Capacity in Concrete	28.5mm
Max RPM	0 - 1500
Max BPM	0 - 5500
Blow Energy	4.8J
Vibration Level (3-axis) Drilling into Concrete / Chipping	10 m/s <sup>2</sup>
Weight	3.4kg



**Includes:** (1) 4m Cable (1) Side Handle (1) Metal Depth Gauge (1) Carrying Case

## SDS-Plus 3-Mode Drill/Rotary Hammer

PH30POWERX

### Specifications:

Power Input	1030W
Max. Drilling Capacity in Concrete	30mm
Max. Drilling Capacity in Wood / Steel	40 / 13 mm
Full Load Hammer Action	0 – 3800bpm
Blow Energy	3.6 J
Vibration Level (3-Axis) Drilling into Concrete / Chipping	22.0 / 14.0 m/s <sup>2</sup>
Weight	3.0kg



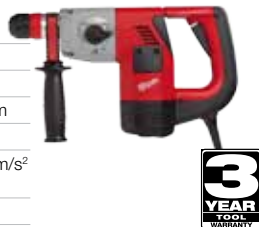
**Includes:** (1) 4m Cable (1) FIXTEC™ Adaptor with Keyless Chuck (1) Side Handle with Metal Depth Gauge (1) Carrying Case

## 32mm SDS-Plus 3-Mode Rotary Hammer

PLH32XE

### Specifications:

Power Input	900W
Max. Drilling Capacity in Concrete	32mm
Max. Drilling Capacity in Wood / Steel	40 / 16mm
Full Load Hammer Action	0 – 4500bpm
Blow Energy	3.8J
Vibration Level (3-Axis) Drilling into Concrete / Chipping	22.0 / 15.5 m/s <sup>2</sup>
Weight	3.6kg



**Includes:** (1) 4m Cable (1) Front Handle with Metal Depth Gauge (1) Bit Lubricant (1) Carry Case

### Features & Benefits

- Slimline design for great handling in tight situations
- Unmatched performance with 3.3J blow energy and 4000 bpm
- Lowest vibration at drilling into concrete: only 14.5m/s<sup>2</sup>
- Extreme Milwaukee® durability thanks to integrated metal block technology
- Innovative and patented internal weight reduction technology
- 3 mode functionality: drilling/hammer drilling or chiseling
- Safety clutch



### Features & Benefits

- Tough, durable hammer with excellent drilling performance in concrete from the high torque motor
- Hardest hitting rotary hammer in its class: 4.8J of Impact Energy
- Low vibration due to ergonomic soft grip on main and side handle
- Durability: All Metal Gear Case provides maximum durability for jobsite conditions
- Ergonomics: Lowest vibration in it's class – 10m/s<sup>2</sup>
- 3 Mode Function: Rotary Hammer, Hammer Only (with Chisel Stop), Rotation Only
- Forward/Reverse modes



### Features & Benefits

- Brush rotation ring (for same power in forward & reverse action)
- Soft hammer mode for drilling in sensitive materials
- FIXTEC system offers a fast change of chuck between SDS-Plus and keyless drill chuck
- Soft start for precise start of drilling/chiseling



### Features & Benefits

- Tough, durable hammer with excellent drilling performance in concrete from the high torque motor
- Compact 'L-shape' design with Anti-Vibration-System and soft grip handle
- FIXTEC™ system. Fast change of chuck between SDS-Plus and keyless drill chuck
- Heavy Duty magnesium gear casing for longer operational life
- Reliable safety clutch protects machine and user





# ROTARY HAMMERS & BREAKERS

## KANGO 540S 5.0KG SDS-Max 2-Mode

K540S

### Specifications:

Power Input	1100W
Blow Energy Chiseling/Drilling	7.5 J
Drilling Ø Solid Bit/Tunnel Bit	40 / 65mm
Drilling Ø With Core Cutter	100mm
Tool Reception	SDS-Max
Drilling Speed (RPM Full Load)	450rpm
Blow Rate (BPM Full Load)	3000bpm
Weight	6.3 kg



**Includes:** (1) 4m Cable (1) Auxiliary Straight Handle (1) Carrying Case

### Features & Benefits

- Magnesium gear housing for tough environments, exact fitting of gear components and better cooling
- Safety clutch protects machine and user if bit jams
- 2-Mode Hammer Drilling/Chiseling
- Low vibration construction
- Soft grip main and side handle for less vibration and user comfort
- Angled cable for better ergonomics and durability



## KANGO 545S 6.7KG SDS-Max 2-Mode

4933398200

### Specifications:

Power Input	1300W
Blow Energy Chiseling / Drilling	14 J
Drilling Speed (RPM Full Load)	450rpm
Blow Rate (BPM Full Load)	2840bpm
Vibration Level (3-Axis) Drilling into Concrete / Chipping	13.0 / 9.0 m/s <sup>2</sup>
Tool Reception	SDS-Max
Weight	6.7 kg



**Includes:** (1) 6m Cable (1) Auxiliary Straight Handle (1) Grease (1) Carrying Case

### Features & Benefits

- AVS Anti-Vibration-System and soft grip on front and back handle
- Soft hammer mode reduces blow energy for drilling / chiseling in sensitive materials
- Soft start for precise start of drilling / chiseling
- Constant electronics for keeping the speed uniform even under load
- Lock-on switch for more comfortable extended use
- Service indicator light



## KANGO 950S 11.8KG SDS-MAX 2-MODE

4933375792

### Specifications:

Power Input	1700 W
Blow Energy	27 J
Blow Rate (Under Load)	975 – 1950bpm
Full Load Speed	125 – 250rpm
Drilling Capacity with Tunnel Bits	50-80mm
Vibration Level (3-Axis) Drilling into Concrete / Breaking	12.5 / 11.0 m/s <sup>2</sup>
Weight with Straight Handle	11.8kg



**Includes:** (1) 6m Cable (1) Front Spade Handle (1) Auxiliary Straight Handle (1) Dust Shield (1) Grease (1) Carrying Case

### Features & Benefits

- DIGITRONIC® - fullwave electronics for precise power adjustment to application
- Can be used with fullwave inverter generators
- 2 handles – all with AVS Anti-Vibration-System and soft grip for comfortable and less tiring use
- Inline motor design for more comfort in below waist applications
- Automatic lubrication system for longer life time



## KANGO 950K 11.8KG K-Hex 2-Mode

4933375680

### Specifications:

Power Input	1700W
Blow Energy	27 J
Blow Rate (BPM Under Load)	975 – 1950bpm
Full Load Speed (RPM)	125 – 250rpm
Drilling Capacity with Tunnel Bits	50-80mm
Vibration Level (3-Axis) Drilling into Concrete / Breaking	12.5 / 11.0 m/s <sup>2</sup>
Weight With Straight Handle	11.8kg



**Includes:** (1) 6m Cable (1) Front Spade Handle (1) Auxiliary Straight Handle (1) Dust Shield (1) Grease (1) Carrying Case

### Features & Benefits

- DIGITRONIC® - fullwave electronics for precise power adjustment to application
- Can be used with fullwave inverter generators
- 2 handles – all with AVS Anti-Vibration-System and soft grip for comfortable and less tiring use
- Inline motor design for more comfort in below waist applications
- Automatic lubrication system for longer life time
- Safety clutch to protect user and tool in case of bit jam



## ROTARY HAMMERS & BREAKERS

### KANGO 5.0KG SDS-Max Single Mode

K500ST

#### Specifications:

Power Input	1100W
Blow Energy	7.5 J
Blow Rate (Full Load)	3000bpm
Tool Reception	SDS-Max
Vibration Level (3-Axis) Chiseling	16.7m/s <sup>2</sup>
Weight	5.9kg



**Includes:** (1) Side Handle (1) Hard Carrying Case

### KANGO 900K 11KG K-HEX Single Mode

4933375690

#### Specifications:

Power Input	1600W
Blow Energy	27 J
Blow Rate (Under Load)	975 – 1950bpm
Vibration Level (3-axis) Breaking	11.0 m/s <sup>2</sup>
Weight with Spade Handle	11.0kg



**Includes:** (1) 6m Cable (1) Front Spade Handle (1) Auxiliary Straight Handle (1) Dust Shield (1) Grease (1) Carrying Case

#### Features & Benefits

- Single mode (Hammer Only) SDS-Max bit reception - Perfect for larger chipping or breaking jobs
- 12-Position chisel function offers desired hammer bit orientation
- Low vibration system and soft grip on front and back handle
- Robust magnesium gear housing



#### Features & Benefits

- 1600W motor – best in class with plenty in reserve for the toughest applications
- DIGITRONIC® - fullwave electronics for precise power adjustment to application
- 2 handles – all with AVS Anti-Vibration-System and soft grip for comfortable and less tiring use
- Inline motor design for more comfort in below waist applications
- Automatic lubrication system for longer lifetime



## WALL CHASERS

### 125mm, 1500W Wall Chaser

4933383010

#### Specifications:

Power Input	1500W
Disc Diameter	125mm
No Load Speed	9500rpm
Spindle Thread	M14
Bore Size	22.23mm
Cutting Width/Depth	15 – 26 mm / 8 – 30 mm
Weight	4.3kg



**Includes:** (1) 4m Cable (1) Special Chisel (1) Side Handle (1) Keys (1) Metal Case

#### Features & Benefits

- Powerful 1500W motor
- Cutting width can easily be set with the stepless adjustment
- High Performance electronics with overload protection.
- Spindle lock
- Inline dust extraction connection.
- Ideal for the installation of conduit for electrical cables





## WALL CHASERS

### 150mm, 1900W Wall Chaser

4933383350

**Specifications:**

Power Input	1900W
Disc Diameter	150mm
No Load Speed	5800rpm
Spindle Thread	M14
Bore Size	22.23mm
Cutting Width/Depth	17- 45 mm/ 0- 45 mm
Weight	6.6kg



**Includes:** (1) 4m Cable (2) Diamond Discs (1) Special Chisel (1) Side Handle (1) Keys (1) Metal Case

### Features & Benefits

- Dust extraction connection
- Ergonomic soft grip for comfortable use
- Spindle lock
- Unique swing-grip adjustable handle for optimum user comfort whatever the cutting application
- Four rollers for extra stability and straighter cuts
- Delivered with two 150mm diamond discs



### 230mm, 2300W Wall Chaser

4933385125

**Specifications:**

Power Input	2300W
Disc Diameter	230mm
No Load Speed	6600rpm
Spindle Thread	M14
Bore Size	22.23mm
Cutting Width/Depth	17- 56 mm/ 10 - 65 mm
Weight	8.7kg



**Includes:** (1) 4m Cable (1) Special Chisel (1) Side Handle (1) Keys (1) Metal Case

### Features & Benefits

- Ideal for plumbers and builders for installing waste pipes
- Powerful 2300W motor
- Easy cutting width adjustment (17-56mm)
- Dust extraction connection
- Axial rotation of drive unit for optimum cutting into corners
- High performance electronics with overload protection



## GRINDING, SANDING & POLISHING

### 100mm (4") Angle Grinder, 750W

AG750-100

**Specifications:**

Power Input	750W
Disc Diameter	100mm
No Load Speed	10,000rpm
Spindle Thread	M10
Cutting Depth	15mm
Weight	1.8kg



**Includes:** (1) Side Handle (1) Guard (1) Spanner  
Replacement model coming soon AG800-100

### Features & Benefits

- 750W motor delivering 10,000 rpm
- Compact and slim design
- 2 position handle
- Light weight 1.8 kg
- Burst resistant guard



# GRINDING, SANDING & POLISHING

## 100mm (4") Slim Body Angle Grinder, 720W

AG7-100S

### Specifications:

Power Input	720W
Disc Diameter	100mm
No Load Speed	11,000rpm
Spindle Thread	M10
Cutting Depth	19mm
Weight	1.8kg



**Includes:** (1) Side Handle (1) Guard (1) Spanner

## 125mm (5") Angle Grinder, 750W

AG750-125

### Specifications:

Power Input	750W
Disc Diameter	125mm
No Load Speed	10,000rpm
Spindle Thread	M14
Cutting Depth	28mm
Weight	1.8kg



**Includes:** (1) Side Handle (1) Guard (1) Spanner  
Replacement model coming soon AG800-125

## 125mm (5") Angle Grinder, 1100W

AG11-125X

### Specifications:

Power Input	1100W
Disc Diameter	125mm
No Load Speed	11,000rpm
Spindle Thread	M14
Cutting Depth	33.4mm
Weight	2.4kg



**Includes:** (1) AG11-125X (1) Toolless Adjustable Guard (1) FIXTEC™ Flange Nut (1) Side Handle (1) Spanner Wrench

## 125mm (5") Angle Grinder, 1200W

AGV12-125XPD

### Specifications:

Power Input	1200W
Disc Diameter	125mm
No Load Speed	11,000rpm
Spindle Thread	M 14
Cutting Depth	33mm
Weight	2.4kg



**Includes:** (1) Toolless Adjustable Guard (1) Anti-Vibration Side Handle

### Features & Benefits

- 720W motor for maximum durability and performance
- Slim body design for the best grip and user comfort
- Low profile gear case allows work in space restricted areas
- Burst resistant guard



### Features & Benefits

- Powerful 750W motor delivering 10,000 rpm
- Very compact and slim design for comfortable use
- Light weight grinder with only 1.8 kg
- Burst resistant safety guard for best user protection
- 4m cable for best protection on the job site



### Features & Benefits

- Powerful 1100W motor, high overload protection and power
- Epoxy coated field protects motor against abrasion
- FIXTEC™ flange nut, toolless, fast and easy disc changes
- Tool-free burst-resistant guard
- Soft grip 3 position handle
- Multi-port exhaust maximises airflow improving motor life and performance



### Features & Benefits

- Powerful 1200W motor for maximum performance
- Milwaukee® Electronics offer soft start, line lock-out, clutch and overload protection
- Tool-free adjustable guard
- FIXTEC™ system for toolless, fast and easy disc changes
- Anti-vibration side handle
- Paddle lock-off Deadman switch



# GRINDING, SANDING & POLISHING

## 125mm (5") Angle Grinder 1250W

AG13-125X (P/N:4933407310)

### Specifications:

Power Input	1250W
Disc Diameter	125mm
No Load Speed	11,000rpm
Spindle Thread	M14
Cutting Depth	33mm
Weight	2.5kg



**Includes:** (1) Toolless Adjustable Guard (1) Flange (1) FIXTEC™ Flange Nut (1) Side Handle

## 125mm (5") Angle Grinder, 1520W

AG16-125XC (P/N: 4933407275)

### Specifications:

Power Input	1520W
Disc Diameter	125mm
No Load Speed	11,000rpm
Spindle Thread	M14
Cutting Depth	33mm
Weight	2.5kg



**Includes:** (1) Toolless Adjustable Guard (1) Flange (1) FIXTEC™ Flange Nut (1) Side Handle

## 125mm (5") Angle Grinder, 1550W

AGV15-125XE

### Specifications:

Power Input	1550W
Disc Diameter	125mm
No Load Speed	2800 - 11,000rpm
Spindle Thread	M14
Cutting Depth	33mm
Weight	2.6kg



**Includes:** (1) Toolless Adjustable Guard (1) Anti-Vibration Side Handle

## 180mm (7") Angle Grinder, 1520W

AG16-180C

### Specifications:

Power Input	1520W
Disc Diameter	180mm
No Load Speed	7600rpm
Spindle Thread	M14
Cutting Depth	58mm
Weight	2.9 kg



**Includes:** (1) Toolless Adjustable Guard (1) Side Handle (1) FIXTEC™ Flange Nut (1) Side Handle

### Features & Benefits

- Protector motor, epoxy resin coated field and heavy-duty winding protection
- Patented Snap-lock Guard
- Flat metal gear head for excellent visibility and optimised cutting depth
- FIXTEC™ Flange Nut, toolless, fast and easy disc changes
- Automatic cut-off carbon brushes with easy access brush service covers
- Deadman paddle switch and rat tail grip



### Features & Benefits

- Protector motor, epoxy resin coated field and heavy-duty winding protection
- New digital electronic pack offers constant speed, soft start, motor overload protection and no-load speed limitation
- Quick release guard
- FIXTEC™ Flange nut, toolless, fast and easy disc changes
- Automatic cut-off carbon brushes with easy access brush service covers
- Deadman paddle switch and rat tail grip



### Features & Benefits

- Powerful 1550W motor for maximum performance
- Milwaukee® electronics offer soft start, line lock-out, clutch and overload protection
- Constant Power Technology™
- Electronic variable speed control
- Tool-free adjustable guard
- FIXTEC™ system for tool less, fast and easy disc changes
- Anti-vibration side handle



### Features & Benefits

- Digital electronics with constant speed, soft start, motor overload protection and no-load speed limitation
- Spindle lock with safety mechanism
- Deadman switch and rat tail grip
- Automatic cut-off carbon brushes with easy access brush service covers





## GRINDING, SANDING & POLISHING

### 230mm (9") Angle Grinder, 2200W

AGV22-230

#### Specifications:

Power Input	2200W
Disc Diameter	230mm
No Load Speed	6600rpm
Handle	AVS Side Handle
Cutting Depth	68mm
Guard	Tool-free Burst Resistant
Weight	3kg



**Includes:** (1) AGV 22-230 (1) 230mm (9") Type 27 Guard (1) AVS Side Handle (1) Spanner Wrench (1) Flange

#### Features & Benefits

- Tool-free adjustable guard
- Paddle lock-off deadman switch with rat tail grip
- Double action non-lock on switch
- Overmold for sure grip
- Starting current limiter & soft start
- 2 position anti-vibration side handle
- Brush access panel



### M8 AVS Handle

4931432245



#### Features & Benefits

- AVS (Anti Vibration System)
- Moulded grip for superior handling
- Handle length 150mm (excluding thread)

### M10 AVS Handle

304057001



#### Features & Benefits

- AVS (Anti Vibration System)
- Moulded grip for superior handling
- Handle length 150mm (excluding thread)

### M14 AVS Handle

036003002034



#### Features & Benefits

- AVS (Anti Vibration System)
- Moulded grip for superior handling
- Handle length 150mm (excluding thread)

# GRINDING, SANDING & POLISHING

## 125mm (5") Random Orbital Sander, 300W

ROS125E

### Specifications:

Power	300W
No Load Speed	7000 - 12,000rpm
Orbital Action	2.5mm
Oscillation Rate	14,000 - 26,000rpm
Paper Fitment	8 Hole
Weight	1.7kg



**Includes:** (1) Textile Dust Collection Bag (1) 60 Grit Sandpaper (1) 80 Grit Sandpaper (1) 120 Grit Sandpaper (1) Carrying Case

## 150mm (6") Random Orbital Sander 440W

ROS150E-2

### Specifications:

Power	440W
No Load Speed	4,000 - 10,000rpm
Orbital Action	3.2mm / 6.4mm
Paper Fitment	Hook and Loop
Weight	3.0kg



**Includes:** (1) Textile Dust Collection Bag (1) Assorted Sanding Sheets (1) Carrying Case

## 140mm (1/4" Sheet) Palm Sander 260W

SPS140

### Specifications:

Power	260W
No Load Speed	14,700rpm
Orbital Action	1.6mm
Sandpaper Size	1/4" Sheet
Paper Fitment	Hook and Loop
Weight	1.6kg



**Includes:** (1) 1/4" Sheet Punch Pad (1) Dust Bag (1) 180 Grit Sandpaper (1) 200 Grit Sandpaper (1) 220 Grit Sandpaper (1) Soft Case

## 180mm (7") Disc Sander, 1200W

AS12E

### Specifications:

Power Input	1200W
Disc Diameter of Base Plate	180mm
No Load Speed	1800 - 4800rpm
Spindle Thread	M14
Cable Length	4m
Weight	2.5kg



**Includes:** (1) Hand Guard (1) Side Handle (1) Backing Pad (1) Nut (1) Spanner

### Features & Benefits

- Palm grip design
- Rubber overmold grip
- Electronic variable speed control
- Dust collection bag
- Hook & loop fitment
- 4m power cord
- Dust extraction port



### Features & Benefits

- Powerful 440W motor - provides 4,000-10,000 OPM
- Diecast base construction - for strength and durability
- 2-Mode oscillation selection (3.2/6.4mm) - for control of material removable
- Soft start & pad brake - for a gouge free workpiece
- Dust extraction - collection bag or used in conjunction with extractor
- Electronic variable speed - to suit a range of job applications



### Features & Benefits

- Tactile rubber top and body grip surface for added comfort and control
- Large Tool-Free paper clamp tabs for effortless paper changes
- Pad cushioning and brake to reduce swirl marks and ensure a smoother finish
- Removable top allows for easy service and brush replacement
- In-line dust port with flexible dust collection bag to capture maximum amount of dust without compromising line of sight
- Integrated vacuum ports fits 32mm or 57mm hoses for efficient dust removal when used in conjunction with extractor.



### Features & Benefits

- Digital electronics offer variable speed, soft start, motor overload protection and no load limitation
- Low speed makes it ideal for fine surface work
- Internal winding protection
- Automatic cut-off carbon brushes
- Ergonomic design and spindle lock
- Low weight and sleek form for ideal handling



## GRINDING, SANDING & POLISHING

### 200mm High Torque Polisher 1450W

AP14-2200E

#### Specifications:

Power Input	1450W
Max Pad Diameter	200mm
No Load Speed	490-2100rpm
Spindle Thread	M14
Cable Length	6m
Weight	2.3kg



**Includes:** (1) Hand Guard (1) Side Handle (1) Backing Pad

### 355mm Chopsaw 2300W

CHS355

#### Specifications:

Power Input	2300W
No Load Speed	3800rpm
Abrasive Wheel Diameter	355mm
Drilling Capacity with Tunnel Bits	50-80mm
Arbour Size	25.4mm
Weight	18.0kg



**Includes:** (1) Spanner (1) HEX Key (1) 355mm Cutting Disc

### Die Grinder, 500W

DG30E

#### Specifications:

Power Input	500W
No Load Speed	10,000 - 30,000rpm
Collet Diameter	6mm (1/4") + 8mm
Grinding Wheel Diameter Max	40mm (at 80m /sec)
Grinding Pin Diameter Max	20mm (at 45m / sec)
Weight	1.3kg



**Includes:** (1) Spanner (1) 1/4" Collet (6mm & 8mm Collets)

### Long Nose Die Grinder, 600W

DGL30E

#### Specifications:

Power Input	600W
No Load Speed	10,000 - 30,000rpm
Collet Diameter	6mm (1/4") + 8mm
Grinding Wheel Diameter Max	40mm (at 80m /sec)
Grinding Pin Diameter Max	20mm (at 45m / sec)
Weight	1.9kg



**Includes:** (1) Spanner (1) 1/4" Collet (6mm & 8mm Collets)

#### Features & Benefits

- Thermal overload protection to prevent overheating
- Unique 'finger grip' for comfortable working position, especially when working with the tool vertically
- 7 electronically controlled speed settings for accurate application speed
- Premium high torque gearbox maintains speed under load
- Flexible and soft hook and loop backing pad avoids scratches on paintwork
- 6m long PUR cord to prevent marks on the paintwork and allows the user to work easily around the complete car or project



#### Features & Benefits

- Lock pin function keeps the saw closed position during transportation (no chain required)
- Quick release mitre adjustment for fast angle settings from -45° to +45°
- Quick release vice clamp for fast work piece change
- Spindle lock for fast and easy disc change
- Easy brush change due to external brush doors
- Integrated metal fan for best durability and long life



#### Features & Benefits

- Variable speed, complete user control
- Soft start electronics, precise start of grinding
- Short and compact design, one-handed grinding
- Suitable for stationary use, using the 43mm spindle neck
- Cut-off carbon brushes and metal gear box
- Lightweight and balanced



#### Features & Benefits

- Variable speed, complete user control
- Soft start electronics, precise start of grinding and maximum safety
- Cut-off Carbon brushes, protect motor commutator from damage
- Long spindle, easy access of awkward places
- Electronic speed control, extra high speed 30,000 RPM
- Precision metal gear box with double bearing setting of spindle





# IMPACT WRENCHES

## 1/2" Impact Wrench, 725W

IPWE400RQ

### Specifications:

Power Input	725W
Impact Rate/min	1000 - 2600
No Load Speed	0 - 1700rpm
Torque	400Nm
Tool Reception	13mm (1/2")
Recommended Bolt Range	M12 - M20



**Includes:** (1) 4m Quik-Lok™ Cable

### Features & Benefits

- Powerful 725W motor, 0-1700 RPM and 1000-2600 IPM (no load)
- Delivers up to 400Nm torque
- 1/2" drive with Pin Detent, securely retain sockets and adapters
- Electronically controlled speed dial offers complete user control
- Lightweight and balanced
- Soft grip and ergonomic handle design



## 3/4" Impact Wrench, 725W

IPWE520RQ (P/N: 907650)

### Specifications:

Power Input	725W
Impact Rate/min	1000 - 2500
No Load Speed	0 - 1700rpm
Torque	520Nm
Tool Reception	19.05mm (3/4")
Recommended Bolt Range	M16 - M24



**Includes:** (1) 4m Quik-Lok™ Cable

### Features & Benefits

- Powerful 725W motor, 0-1700 RPM and 1000-2500 IPM (no load)
- Delivers up to 520Nm torque
- 3/4" square drive
- Electronically controlled speed dial offers complete user control
- Lightweight and balanced, reduced user fatigue
- Soft grip and ergonomic handle design, comfortable handling



## WOODWORKING SAWS

### Barrel Grip Jigsaw

FSPE110X

#### Specifications:

Power Input	710W
No Load Stroke Rate	500 - 3000rpm
Pendulum Settings	4
Mitre Cutting Angle to	45°
Stroke	26mm
Cutting Depth (Wood / Aluminium)	120/30mm
Cutting Depth (Metal/ Steel/ Ceramics)	20/10/10mm
Weight	2.5kg



**Includes:** (1) Anti-Splintering Device (1) Sliding Shoe (1) Absorption Adapter (5) Saw Blades (1) Carrying Case

### 184mm (7 1/4") Circular Saw, 1600W

CS60

#### Specifications:

Power Input	1600W
Max Depth of Cut	61mm
Blade/Arbour	184/16mm
No Load Speed	5800rpm
Weight	4.8kg



**Includes:** (1) Side Fence (1) Bag (1) Saw Blade Key

### 305mm (12") DB Sliding Mitre Saw 1800W

MS305DB

#### Specifications:

Power Input	1800W
No Load Speed	3200rpm
Arbour Size	30mm
Mitre 0°, Bevel 0°	102mm x 342mm
Mitre 0°, Bevel 45° Left	57mm x 342mm
Mitre 0°, Bevel 0° Right	45mm x 342mm
Mitre 45°, Bevel 0°	102mm x 241mm
Mitre 45°, Bevel 45° Left	57mm x 241mm
Weight	29.5kg



**Includes:** (1) Workpiece Clamp (1) Dust Bag (1) Saw Blade (60 Teeth) (1) Vacuum Adaptor 35 / 58 mm (1) Wrench (1) 3m Cable

### Mitre Saw Stand

MSL3000

#### Specifications:

Height	810mm
Base Length	1100mm
Extended Up To	3000mm
Folds Down To	1200mm
Bearing Force	250kg
Weight	23kg



#### Features & Benefits

- Pendulum Action with 4 adjustment levels for faster cutting
- Electronics for variable speed preselection
- FIXTEC™ base plate adjustment system and angle setting
- FIXTEC™ Keyless Blade Change System
- Die cast aluminium base plate and metal gear case
- Efficient sawdust blower and dust extraction system for clean working and clear view of the cutting area



#### Features & Benefits

- Quick release locking lever design for fast bevel adjustments
- Large depth cutting capacity of 61mm
- Large, ergonomic handles and levers for improved ergonomics and control
- Long side fence for straight cuts and precise guidance
- Heavy duty cast alloy base and integrated blower keeps cut line clear for accuracy



#### Features & Benefits

- Digital mitre angle readout - provides repeatable accuracy to 0.1°
- Dual integral jobsite lights
- Unique inline motor design for excellent visibility from both sides
- Integral dust channel - captures 75% of all dust and debris
- Mitre capacity 55° to the left and 60° to the right - for maximum versatility.
- Dual-bevel design- to incline the saw head left and right 0° - 48° with bevel detents L & R at: 0°, 22.5°, 33°, 85°, 45°, 48°



#### Features & Benefits

- Material supports with steel rollers
- 2500kg table area weight capacity
- Rubber wheels, collapsible and adjustable legs
- 81cm working height
- Quick to assemble, set up in seconds
- Universal - Compatible with most 10" and 12" mitre saws





## WOODWORKING SAWS

### Compact Mitre Saw Stand

MSL1000

#### Specifications:

Height	850mm
Base Length	1081mm
Extended Up To:	2082mm
Folds Down To:	1081mm
Bearing Force	180kg
Weight	16.6kg



#### Features & Benefits

- 1.08m total length
- Extendable each side - 2.08m extended
- Quick release brackets
- One point leg adjustment for levelling on uneven ground
- Height adjustable length stops
- Will hold up to 180kg
- Universal - compatible with most 8"-10" mitre saws
- Fully compatible with Milwaukee® MS216SB and MS305DB



### 25L Wet/Dry L-Class Dust Extractor

AS2-250ELCP

#### Specifications:

Power Outlet Rating	1400W
Air Volume	3600 l/min
Max Vacuum	210 mbar
Working Sound Level	64dB (A)
Weight	8kg



**Includes:** (1) 3.5m Suction Hose (1) Floor Cleaning Kit (2) Power Tool Connection Adaptors (1) PET Filter (1) Fleece Filter Bag (1) Disposable Bag (1) Crevice Tool

#### Features & Benefits

- Milwaukee - Clear Press - Filter Cleaning System
- Robust polypropylene container
- Washable PET filter
- Power tool socket with auto on/off
- 3600 litres/min airflow with 210 mbar suction
- Low sound level for undistruptive use ideal at work sites
- 5m power cable and 3.5m hose for large area coverage
- Easy transport with on-board accessory holder, tube and hose holder



### 30L Wet/Dry L-Class Dust Extractor

AS300ELCP

#### Specifications:

Power Input Max	1500W
Air Volume	3700 l/min
Max Vacuum	250 mbar
Working Sound Level	59dB (A)
Power Cable	7.5m
Weight	10kg



**Includes:** (1) 4m Anti-Static Suction Hose (2) Extension Tubes (1) Floor and Crevice Nozzles (2) Power Tool Adaptors (1) Fleece Bag (1) Disposable Bag

#### Features & Benefits

- Dust class L. Standard MAK-factor > 1 mg/m<sup>3</sup>
- Milwaukee® - Clear Press - Filter Cleaning System
- On-board power tool socket with auto on/off and 5 second stop delay to extract residual dust particles
- Soft start and speed regulation in both vacuum and dust extraction mode
- Washable, long life PET filter
- Super silent turbine for low noise
- Anti-static package to prevent shocks caused by static charges
- On-board storage for all tools, hose, cable and accessories making transport easy







Nothing but **HEAVY DUTY.**<sup>TM</sup>

**M12**<sup>TM</sup> **M18**<sup>TM</sup>

# **FORCE LOGIC**<sup>TM</sup>

**PRESS TOOL SYSTEMS**

**M12**<sup>TM</sup>

**M12<sup>TM</sup> FORCE LOGIC<sup>TM</sup>**  
Press Tool  
M12HPT-0



**M18**<sup>TM</sup>

**M18<sup>TM</sup> FORCE LOGIC<sup>TM</sup>**  
Brushless Press Tool  
M18BLHPT-0



# FORCE LOGIC™

## THE SMALLEST MOST INTELLIGENT PRESS TOOLS



Milwaukee® FORCE LOGIC™ Press Tools represent a new standard in pressing technology. Combining the revolutionary REDLITHIUM-ION™ battery pack, proprietary REDLINK™ Electronics, and a compact hydraulic mechanism, FORCE LOGIC™ Press Tools deliver on their promise: the smallest, most intelligent press tools.

---

### WHAT IS PRESS?

Press is a method of joining pipes that use force to make a connection. Press fittings are currently available for copper, stainless steel, PEX and black iron pipe.

### WHY PRESS?

- Save Time
- Consistent & Reliable
- Safe



**PRESS TOOLS**

**M12™ FORCE LOGIC™ Press Tool**

M12HPT-0

**Specifications:**

Sound Pressure Level (dB(A))	75.5
Sound Power Level (dB(A))	86.5
Press Cycles	32,000
Vibration Level (m/s <sup>2</sup> )	<2.5
Pressing Force	24kN
Cycle Time	1.7s
Weight (with battery)	1.8kg

**Includes:** Tool only (battery and charger sold separately)



**Features & Benefits**

- Designed for one-handed use
- Press indicator provides visual assurance of a quality connection
- Industry leading 32,000 cycles between calibration inspections
- Interchangeable jaws enable the quick adjustments from 1/2" - 1 1/4"
- M12™ System provides up to 40+ solutions on one pack



**M12™ FORCE LOGIC™ PRESS JAWS**

**Features & Benefits**

- 2-Hinge Design: Requires Less Wall Clearance to Fit Around Pipe
- Durable Steel Rings and Adapter: Forged Steel Provides Outstanding Durability
- Customised Kit: Design your own kit for your application requirement
- Lightweight

**M12™ 1/2" Press Tool Jaw (AV15)**

M12HPT-AV15



**M12™ 3/4" Press Tool Jaw (AV20)**

M12HPT-AV20



**M12™ 1" Press Tool Jaw (AV25)**

M12HPT-AV25



**M12™ 1 1/4" Press Tool Jaw (AV32)**

M12HPT-AV32



## PRESS TOOLS

### M18™ FORCE LOGIC™ Brushless Press Tool

M18BLHPT-0

#### Specifications:

Press Force (kN)	32kN
Max. Press Size (Metal)	100mm
Max. Press Size (Plastic)	110mm
Press Cycles	40,000
Cycle Time	1.7s
Weight (with battery)	2.9kg

**Includes:** Tool only (battery and charger sold separately)



#### Features & Benefits

- One hand operated tool for overhead applications and working in narrow spaces
- FORCE LOGIC™ press indicator: provides visual confirmation of a quality connection
- FORCE LOGIC™ long life reliability: Industry-leading 40,000 cycles between calibration inspections
- Universal jaw reception to fit most common jaws available on the market



## M18™ FORCE LOGIC™ PRESS JAWS

#### Features & Benefits (2 1/2" - 4")

- 2-Hinge Design: Requires Less Wall Clearance to Fit Around Pipe
- Durable Steel Rings and Adapter: Forged Steel Provides Outstanding Durability
- Lightweight

### M18™ 1/2" Press Tool Jaw (AV15)

M18HPT-AV15



### M18™ 3/4" Press Tool Jaw (AV20)

M18HPT-AV20



### M18™ 1" Press Tool Jaw (AV25)

M18HPT-AV25



### M18™ 1 1/4" Press Tool Jaw (AV32)

M18HPT-AV32



### M18™ 1 1/2" Press Tool Jaw (AV40)

M18HPT-AV40



### M18™ 2" Press Tool Jaw (AV50)

M18HPT-AV50



## M18™ 2 1/2" Press Tool Jaw (AV65)

M18HPT-AV65



## M18™ 3" Press Tool Jaw (AV80)

M18HPT-AV80



## M18™ 4" Press Tool Jaw (AV100)

M18HPT-AV100



## M18™ Jaw Ring (65 -100)

M18HPT-JRS











**Nothing but HEAVY DUTY.®**

## **MILWAUKEE DEALER**

**MILWAUKEE AUSTRALIA**  
[milwaukeetools.com.au](http://milwaukeetools.com.au)

21 Kelletts Road  
Rowville VIC 3178  
Local Call: 1300 645 928  
Office Fax: 1800 807 993

**MILWAUKEE NEW ZEALAND**  
[milwaukeetools.co.nz](http://milwaukeetools.co.nz)

2 Landing Drive  
Mangere, Auckland 2022  
Call: (09) 573 0230  
Office Fax: (09) 573 0231  
All New Zealand Enquiries: 0800 279 624 (toll free)

The range of products and content shown in this catalogue may vary depending on availability.

Products and specifications may change without notice.

Errors, omissions and other exceptions disclaimer and copyright.